

# BARANA SIMMENTALS

“Breeding Cattle for the Commercially Minded since 1980”

**22<sup>ND</sup> ANNUAL ON PROPERTY BULL SALE**

**Friday July 8, 2022 | 1pm**



## **41 BULLS**

Predominantly Polled  
32 Simmental  
8 Black Angus  
1 Shorthorn  
+3 Semen Lots

**16  
FEMALES**

**[www.baranasimmentals.com](http://www.baranasimmentals.com)**



**AuctionsPlus**  
Buy and Sell stock nationally



## WELCOME

**Stud principal, Peter Cook has worked hard for over 40 years breeding Simmentals that reinforce Barana's long held reputation with both commercial & stud cattle producers. We have sold bulls nationwide and secured a solid client base over many decades. We are a 'hands on' family business. We live & work on our farm so we understand the hardships & challenges our clients face because we are exposed to those same challenges. We extend our sincere thanks to our valued clients for their continued & solid support.**

**This year's Barana sale will be conducted on farm and livestreamed via AuctionsPlus.**

We aim to offer 41 bulls at our 2022 sale, predominantly polled. Of this year's Barana sale draft, the majority are soft, early maturing, middle-of-the-road type bulls. This style of bull will introduce cattle into your herd that will eat less, have the ability to finish with a higher yield & put more dollars in your pocket. Use purebred Simmental bulls to gain the advantages of hybrid vigour for added performance, weight gain, carcase, fertility, softness & longevity. The females to be offered exhibit the superior maternal traits for which traditional Simmentals are renowned. It is rewarding to see Barana pedigrees in successful stud programmes and Barana genetics breeding on for our clients.

Sale bulls have been supplementary fed from April 2022 on a ration of wheaten hay & light grain mix for 100 days.

Bulls will present in good, strong condition on sale day. Barana bulls are not overdone on feed as we value longevity in the bulls we breed & no foot trimming has been performed on any of the cattle presented.

As in past sales, objective data will be available for each bull & all inspections & guarantees will be provided. All bulls must pass stringent veterinary tests for breeding & soundness. These bulls will be semen tested, including morphology, Breedplan recorded and scanned for EMA, FAT & IMF. Barana maintains a Level 7 J-BAS [Johnes Beef Assurance Score] status.

Each bull in this catalogue has been tested to show that they are not a BVDV Persistently Infected (PI) animal. All sale bulls have been vaccinated against BVDV with Pestigard®,

against Leptospirosis with Ultravac® 7in1 and Vibriosis with Vibrovax®. All sale bulls have been given 2 vaccinations of each product to ensure they have full immunity which is valid for 12 months. This is your assurance that we have taken all available steps to protect our animals against introducing disease into your herd and to ensure their continued performance. We recommend that you continue with annual vaccination to help protect the health of your herd and maximise the productivity of your business. All Simmental bulls have also been vaccinated against 3-day sickness & tick fever [3-germ blood] to suit our Queensland clients. The Angus & Shorthorn bulls have been vaccinated against 3-day sickness.

Free cartage will be offered to bull buyers within a 300 km radius of Barana and for interstate bull buyers, free cartage along the major route from Coolah to Goondiwindi & from Coolah to Wodonga. Queensland bull buyers will also be offered free cartage to Roma. Conditions apply. Please contact Peter Cook to enquire.

The sale is interfaced with AuctionsPlus & will be conducted live online in real time.

The catalogue will be available for preview on our website [www.baranasimmentals.com](http://www.baranasimmentals.com). You can also follow us on Facebook, Twitter & Instagram.

Barana Simmentals offer quality, guarantees, reputation, performance & results. We look forward to seeing you on sale day or to arrange inspection prior to the sale please contact Peter Cook or the selling agents.

## STUD HISTORY

**Barana Simmentals was founded by Stud Principal, Peter Cook in 1980 on traditional European and New Zealand bloodlines. Peter has worked hard for over 42 years through good & bad seasons to secure Barana's long held reputation with both commercial & stud cattle producers around Australia.**

Peter began showing at major Royal Shows in 1986, securing many Champion awards and earning a name for breeding good, sound, functional cattle. He ceased showing cattle in 2001 after 15 years exhibiting & achieving success at all major shows.

Barana has a stud herd including 200 registered & commercial breeders. Great importance is placed on breeding for ease of calving, milk production & fertility and females must be able to rear a calf under natural conditions. Barana has endeavoured to breed bulls that produce steers that are quick growing with good carcass characteristics and the ability to finish. We have enjoyed success in the Australian National Field Days Grass-fed Steer and the RAS NSW Feedlot JapOx Competitions & the Scone Beef Bonanza where we secured the Champion Purebred Carcass with a total point score of 90.867.

Barana bulls get results with clients reporting Simmental Cross Vealers straight off their mothers consistently dressing out at 58% & outdoing other breeds in weight for age. Barana clients have succeeded in gaining a rare Championship/Reserve double in the heavyweight division steer carcass judging at Brisbane Royal with a Simmental Cross Steer sire by a Barana bull. Our clients have topped the annual Bindaree Beef Weaner Sale with a pen of Simmental Cross Steers & won best pen of Euro or Euro Cross Steers in the competition section. Barana clients have topped the Casino Weaner & Grower Sale with 10-11 month old Simmental Cross Weaner Steers consecutively and secured top pen of Euro bred steers at the sale. Our bull buyers report that the introduction of Simmental bulls in their herd has significantly lifted weights in the weaner steers they turn off.

Peter purchased Karewa Jester, a polled son of German sire Eizenherz from New Zealand in 2000. This bull bred well in Barana's polling programme. German genetics were utilised with Zimbo and Gowrie Yankee [P] producing excellent progeny. We introduced South African bred bulls into our Barana herd with Bullock Hills Buster [P] and Corinda Downs Buckshot [AI] [ET] [P] in 2007.

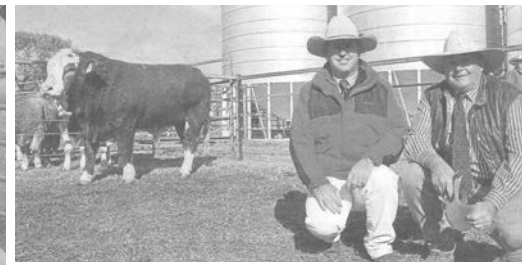
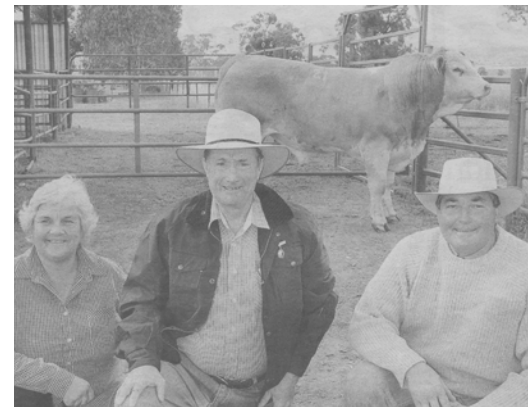
Callendale Jasper [P] and Woonallee Jumbo have produced low birthweight, easy calving, early maturing offspring. We purchased the homozygous polled Woonallee Looking Glass in 2017.

In February 2020 Barana purchased a new outcross stud sire Willandra Panama [P] from the Cowcher family's Willandra Simmental stud in WA followed up with the purchase of Willandra Qantastic [P] in 2021.

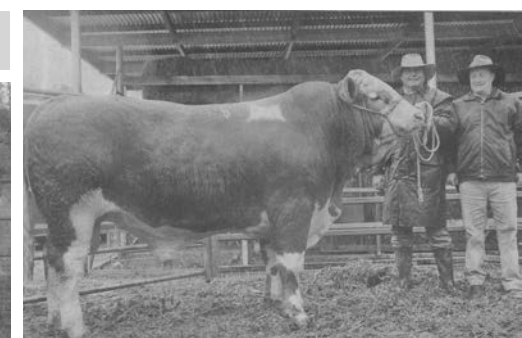
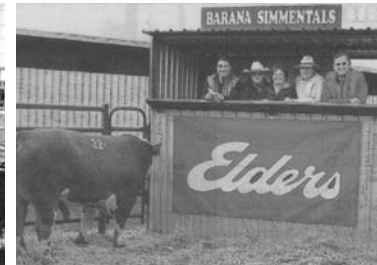
Barana Lindel [PP] our homozygous polled bull is breeding some outstanding progeny.

Barana genetics have been ongoing proven performers for us & our clients over many decades earning champion awards in both the show ring & carcass competitions. The benefits of reliable Barana breeding are evident.

The Barana Sale is the premier sale in NSW for consistent quality & value for money. We hope to continue with the pleasing results achieved in the past at our 22nd Annual On-Farm Sale.



**Barana  
Simmentals  
since 1980**



## How to Register and Bid on AuctionsPlus

1

Go to **www.auctionsplus.com.au** to register at least 48 hours before the sale.

2

Select **"Sign Up"** in the top right hand corner.

3

Fill out your name, mobile number, email address and create a password.

4

Go to your emails and confirm the account.

5

Return to AuctionsPlus and log in.

6

Select **"Dashboard"** and then select **"Request Approval to Buy"**.

7

Fill in buyer details and once completed go back to Dashboard.

8

Complete buyer induction module (approx. 30 minutes).

9

AuctionsPlus will email you to let you know that your account has been approved.

10

Log in on sale day and connect to auction.

11

Bid using the two-step process – unlock the bid button and bid at that price.

12

If you are successful, the selling agent will contact you post sale to organise delivery and payment.

For more information please contact us on:

Phone: (02) 9262 4222

Email: [info@auctionsplus.com.au](mailto:info@auctionsplus.com.au)

## SALE INFORMATION

### Location

Barana is located 14km north of Coolah, NSW, on the Black Stump Way. Refer to map on inside back cover.

### Inspection

Bulls can be inspected from 9am on the day of the sale or pre-sale by appointment. Inspections can be arranged through Peter Cook on 0427 775 233 or the selling agents.

### Rebate

Selling agents are Elders and Davidson Cameron & Co with 2% rebate to outside agents introducing their clients at least 24 hours prior to the sale and settling within 7 days. The agent must attend the sale with the client or on the client's behalf. The rebate will not be paid outside these conditions.

### Phone Bidding

Please contact the selling agents 24 hours prior to the sale to arrange phone bidding.

### No Verbal Instructions

Please complete a buyer's instruction sheet available on sale day from the agents ensuring your phone number is provided. To assist us with delivery of your bull please draw up a map of your property or delivery point indicating nearest roads, towns or prominent landmarks and include your contact phone number.

### AuctionsPlus

The sale is interfaced with AuctionsPlus & will be conducted live online in real time. For those not able to attend the sale, new users must register 24 hours prior to the sale to bid.

### GST

All lots are sold GST exclusive i.e. if the bull is knocked down for \$5,000 you will be charged \$5,500.

### Insurance

There is no vendor insurance on sale bulls. It is the responsibility of the buyers to insure their purchases.

### Luncheon

Complimentary lunch will be supplied.

## SALE INFORMATION

### Transport

NEW SOUTH WALES BULL BUYERS will be offered free cartage within a 300 km radius of Barana. INTERSTATE BULL BUYERS will be offered free cartage along the major route from Coolah to Goondiwindi and from Coolah to Wodonga.

QUEENSLAND BULL BUYERS will also be offered free cartage to Roma. Conditions Apply. Please contact Peter Cook to enquire.

Please note that free cartage does not apply to any female lots offered for sale.

All care will be taken but no responsibility will be accepted for lots waiting for delivery or during delivery. Formal possession, risk & expense passes to the buyer at the fall of the hammer.

### Selling Agents

#### ELDERS

Gunnedah Nik Hannaford 0417 201 460  
Tamworth Brian Kennedy 0427 844 047  
Dubbo Paul Jameson 0428 667 998  
Inverell Lincoln McKinlay 0419 239 963  
Gunnedah John Glover 0428 486 887

#### DAVIDSON CAMERON & CO

Luke Scicluna 0428 421 82  
Paul Banks 0427 922 700  
Tom Tanner 0448 462 177

### AUCTIONEER

Paul Dooley 0458 662 646

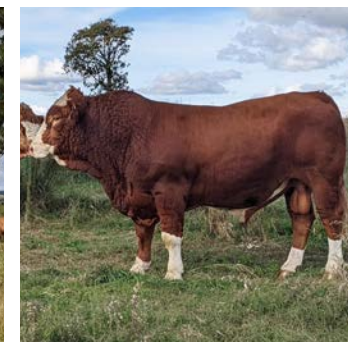
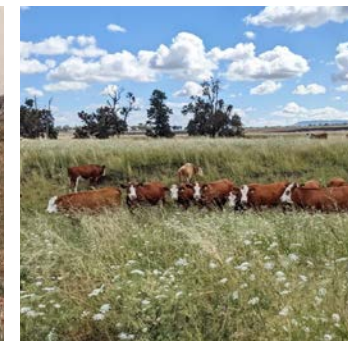
**CONDITIONS FOR SALE BY AUCTION IN NEW SOUTH WALES WILL APPLY**

### Disclaimer

Barana Pastoral, the selling agents, officers, agents & employees, while exercising due care, provide all information without responsibility and do not warrant its accuracy. They also accept no responsibility or liability for accidents that occur on or about the venue. Any person attending the Barana Simmental Sale Venue does so at their own risk.

## FIND US ON INSTAGRAM & FACEBOOK

@baranasimentals



## VETERINARY NOTES

### General Health

All cattle are TB & Brucellosis free. All bulls in this catalogue have been tested to show they are not a BVDV Persistently Infected [PI] animal. All sale bulls have been vaccinated against BVDV with Pestigard, against Leptospirosis with Ultravac 7in1 and Vibriosis with Vibrovax. All sale bulls have been given two vaccinations of each product to ensure they have full immunity which is valid for 12 months. All Simmental bulls have also been vaccinated against 3-day sickness & tick fever [3-germ blood] to suit our Queensland clients. The Angus & Shorthorn bulls have been vaccinated against 3-day sickness.

Barana maintains a Level 7 J-BAS [Johnes Beef Assurance Score] status.

### The Barana Sale Bull Breeding Soundness Evaluation

The sale bulls have been subjected to a number of strict assessments by our Vet to ensure they will be physically and reproductively sound.

### Structural Soundness Examination

All animals have been closely examined paying particular attention to the following: feet, legs, back, jaws, teeth & walking ability. They have been deemed to be within normal parameters.

### Semen Examination

Just prior to the sale all bulls have been electro-ejaculated. At this time, the testes have been palpated and measured. The external genitalia are thoroughly examined, and a gross and microscopic assessment of the semen is made including morphology. This suite of tests is very comprehensive. We have carried out these assessments to ensure that the bull performs satisfactorily.

### Carcase Information

Scan measurements and daily weight gain figures will be available on sale day.

**CONDITIONS FOR SALE BY AUCTION IN NEW SOUTH WALES WILL APPLY**

## Bull Fertility Testing - Degrees of Confidence

Chris Hallett BVSc MVSt

**Many aspects of Veterinary Science are cut and dry. Pregnancy testing for example is either pregnant or not pregnant. Unfortunately, Bull Fertility Testing is not as cut and dry.**

We like to tell our clients that Bull Fertility Testing is all about Degrees of Confidence. The greater the range of bull fertility tests that we look at, the greater the degree of confidence we have that your bull is fertile.

If we look at the bull in a paddock and see he is not lame and has testicles we could say we have 50% confidence he is going to do the job.

We start to improve our confidence level by doing some fertility examinations. We firstly feel and measure his testicles, eliminating undersize or abnormal testicles.

We perform an examination of the internal sex organs removing congenital abnormalities or acquired conditions such as seminal vesiculitis.

Electro-ejaculation examination is utilised for visualisation of the penis and semen. Penile examination is to identify normal appearance and exteriorisation of the penis. Penile abnormalities include such conditions as trauma, warts, adhesions, infections or retained frenulums.

Semen examination under the microscope is utilised to check motility, crush-side morphology and ensuring it is free of infection.

Crush side semen analysis is a screening test for semen morphology analysis. At this stage one can make an educated assessment that the bull is fertile or for greater confidence we can submit a sample to a Semen Morphology Laboratory. A Sperm Morphology Laboratory assesses the semen under higher magnification identifying possible intra sperm-head problems that may not be as identified in a crush-side morphology assessment.

Semen morphological abnormalities may have genotypic (genetic) and phenotypic (environmental) influences hence repeated

morphological tests are required to truly assess the true fertility assessment of a bull if morphological abnormalities are present. The timing between morphological assessments is ideally 70-days apart.

Semen assessment and visualisation of the penis are not necessarily an indication of the serving ability of a bull ie the ability of the bull to gain intromission to the cow. So, a satisfactory serving ability test would further increase our confidence and this test needs to be repeatable and the frequency may give us an additional indication of the bull's libido. Often this test is done by the buyer at the start of joining (if just an observation).

A fertility test is potentially only good for the day that it is performed. Semen production works on a 70-day cycle if anything upsets the bull it may take a full semen cycle for normal semen to be produced again. In this time the bull may go through a transient period of sub or infertility.

Events that upset the semen cycle and production can include disease, stress, transport, environment and nutritional changes. So, if you purchase a bull and move the bull to a completely different environment, we strongly recommend you do your own fertility examination prior to use.

During the joining period we strongly recommend regular bull inspections to ensure bull is in good health, suffering no lameness, penile or fighting injury and that he is still achieving intromission.

## BARANA'S TOP PRICE BULL 2021



### BARANA QUEST Q018 [P]

Lot 4 Barana Quest [P] PTCPQ018 sold to Ivan Price, Charleville, Queensland for \$18,000.

SIRE : Woonallee Jumbo [P]  
DAM : Barana Jewel




## 2022 REFERENCE SIRES



Barana Lindel PTCPL053 [PP]


Sire BARANA EMOTION (P) BARANA ECHUCA (P)  
 Dam BARANA JURYMAN (P) BARANA GEMSTONE G112 (P)  
 BARANA EVATT (P) BREWERS HEIDI X316 (S)

May 2022 Simmental Trans Tasman Group Breedplan														
	Calving Ease DIR [%]	Calving Ease DTRS [%]	Birth Wt. [kg]	200 Day Wt [kg]	400 Day Wt [kg]	600 Day Wt [kg]	Milk [kg]	Scrotal Size [cm]	Carcase Wt [kg]	Eye Muscle Area [sg cm]	Rib Fat [mm]	Rump Fat [mm]	Retail Beef Yield [%]	IMF [%]
EBV	-8.1	-2.4	+5.4	+37	+65	+98	+13	+2.0	+47	+2.9	-0.4	-0.3	+1.2	+0.3
Acc	42%	33%	59%	68%	69%	73%	35%	59%	59%	39%	36%	36%	38%	27%



Woonallee Looking Glass WEEPL105 [PP]

Sire TOPWEIGHT DIRECTOR WOODALLEE BHR TORNADO (P) (ET) (AI)  
 Dam WILLANDRA GOMEZ (P) WOODALLEE VASTI G52 (P)  
 WILLANDRA DIANA Z26 (P) WOODALLEE VASTI C87 (ET) (AI)


May 2022 Simmental Trans Tasman Group Breedplan														
	Calving Ease DIR [%]	Calving Ease DTRS [%]	Birth Wt. [kg]	200 Day Wt [kg]	400 Day Wt [kg]	600 Day Wt [kg]	Milk [kg]	Scrotal Size [cm]	Carcase Wt [kg]	Eye Muscle Area [sg cm]	Rib Fat [mm]	Rump Fat [mm]	Retail Beef Yield [%]	IMF [%]
EBV	-0.4	-1.8	+3.1	+22	+40	+60	+15	+1.3	+25	+1.1	-0.3	-0.2	+1.1	-0.1
Acc	53%	55%	73%	67%	67%	70%	57%	66%	59%	51%	55%	54%	53%	46%

## 2022 REFERENCE SIRES



Willandra Panama AJYPP164 [Pp]

Sire WOONALLEE FLAMBOYANT (P) MAJ ROBO (AI)  
 TOPWEIGHT JACK ARTA (P) Dam WILLANDRA OLIVE B70 (H)  
 TOPWEIGHT BETTINA 333 (P) QUAINDERING OLIVE V19 (H)


May 2022 Simmental Trans Tasman Group Breedplan														
	Calving Ease DIR [%]	Calving Ease DTRS [%]	Birth Wt. [kg]	200 Day Wt [kg]	400 Day Wt [kg]	600 Day Wt [kg]	Milk [kg]	Scrotal Size [cm]	Carcase Wt [kg]	Eye Muscle Area [sg cm]	Rib Fat [mm]	Rump Fat [mm]	Retail Beef Yield [%]	IMF [%]
EBV	+0.3	+2.3	+2.4	+29	+47	+65	+8	+1.0	+35	+3.6	-0.7	-0.5	+1.7	0.0
Acc	53%	55%	73%	74%	73%	73%	59%	39%	62%	52%	51%	51%	51%	39%

## 2022 JOINING SIRE



Wormbete Romeo R8 AGOPR008 [Pp] [AI]

Sire FGAF SELDOM 835L WOONALLEE LAS VEGAS (H) (ET) (AI)  
 FGAF GUERRERO 810Y (Pp) Dam WORMBETE BELLE P182 (P) (ET) (AI)  
 NOSSATERRA REAL WISH 69U WORMBETE BELLE H55 (P)

May 2022 Simmental Trans Tasman Group Breedplan														
	Calving Ease DIR [%]	Calving Ease DTRS [%]	Birth Wt. [kg]	200 Day Wt [kg]	400 Day Wt [kg]	600 Day Wt [kg]	Milk [kg]	Scrotal Size [cm]	Carcase Wt [kg]	Eye Muscle Area [sg cm]	Rib Fat [mm]	Rump Fat [mm]	Retail Beef Yield [%]	IMF [%]
EBV	+7.8	+0.3	-0.7	+10	+18	+27	+10	+0.2	+13	+2.8	-1.1	-1.2	+1.4	0.0
Acc	42%	34%	61%	61%	65%	58%	43%	66%	53%	47%	46%	44%	44%	40%

LOT 1


BARANA RAPHAEL R044 (Pp)  
A/c: BARANA PASTORAL



**DOB** 17/08/2020  
**Tattoo** PTCP R044  
**Colour** Dark Tan  
**Eye Pigment** 100/100  
**Age** 22  
**Comment:**  
Excellent bull to start sale off.  
Tremendous length of body  
& neck extension. Stands on  
good bone. Has some  
presence about him.

Purchaser: \$

May 2022 Simmental Trans Tasman Group Breedplan

	Calving Ease DIR [%]	Calving Ease DTRS [%]	Birth Wt. [kg]	200 Day Wt [kg]	400 Day Wt [kg]	600 Day Wt [kg]	Milk [kg]	Scrotal Size [cm]	Carcase Wt [kg]	Eye Muscle Area [sg cm]	Rib Fat [mm]	Rump Fat [mm]	Retail Beef Yield [%]	IMF [%]
EBV	-7.6	-3.3	5.3	35	64	92	12	1.7	45	2.9	-0.5	-0.4	1.2	0.3
Acc	29%	26%	50%	56%	61%	68%	32%	67%	53%	42%	39%	39%	41%	29%

Sire BARANA EMOTION  
BARANA JURYMAN  
BARANA EVATT  
BARANA LINDEL  
BARANA ECHUCA  
BARANA GEMSTONE G112  
BREWERS HEIDI X316  
Dam CORINDADOWNS BUCKSHOT  
BARANA ECHUCA  
BARANA ZELDA 2  
BARANA HILLY  
GOWRIE YANKEE  
BARANA DUGONG  
BARANA BROOK

LOT 2


BARANA RUPERT R034 (Pp)  
A/c: BARANA PASTORAL



**DOB** 4/08/2020  
**Tattoo** PTCP R034  
**Colour** Light Red  
**Eye Pigment** 100/100  
**Age** 23  
**Comment:**  
Outstanding bull. Has that  
length & depth, stands wide  
behind. Very good feet &  
legs. Lovely soft skin.

Purchaser: \$

May 2022 Simmental Trans Tasman Group Breedplan

	Calving Ease DIR [%]	Calving Ease DTRS [%]	Birth Wt. [kg]	200 Day Wt [kg]	400 Day Wt [kg]	600 Day Wt [kg]	Milk [kg]	Scrotal Size [cm]	Carcase Wt [kg]	Eye Muscle Area [sg cm]	Rib Fat [mm]	Rump Fat [mm]	Retail Beef Yield [%]	IMF [%]
EBV	-6.9	-2.3	4.2	26	49	70	13	3.2	29	1.7	-0.9	-0.6	1.4	0.1
Acc	33%	35%	52%	52%	56%	64%	39%	66%	49%	43%	41%	41%	42%	33%

Sire TOPWEIGHT DIRECTOR  
WILLANDRA GOMEZ  
WILLANDRA DIANA Z26  
WOONALLEE LOOKING GLASS  
WOONALLEE BHR TORNADO  
WOONALLEE VASTI G52  
WOONALLEE VASTI C87  
Dam WATERFRONT DURHAM-D49 (H) (AI)  
WATERFRONT FABIAN-F72 (P)  
LANGTON-GATE PA039 (P)  
BARANA JAZZ (S)  
BARANA YARDLEY (P)  
BARANA BONNIE  
TENNYSONVALE XANDRA (H)

LOT 3

BARANA UNREGISTERED [P]  
A/C: BARANA PASTORAL



**DOB** 1/08/2020  
**Tattoo** PTCP R031  
**Colour** Light Red  
**Eye Pigment** 100/0  
**Age** 23  
**Comment:**  
Showing tremendous carcase  
characteristics. Medium frame.  
Very good feet & legs. Soft  
muscle pattern.

Purchaser: \$

Sire BARANA LINDEL PTCPL053 (PP)  
Dam PUREBRED UNREGISTERED SIMMENTAL COW

LOT 4


BARANA RENEGADE R019 (PP)  
A/c: BARANA PASTORAL



**DOB** 26/07/2020  
**Tattoo** PTCP R019  
**Colour** Red  
**Eye Pigment** 100/100  
**Age** 23  
**Comment:**  
Excellent length of body.  
Heavy, smooth muscle  
pattern.

Purchaser: \$

May 2022 Simmental Trans Tasman Group Breedplan

	Calving Ease DIR [%]	Calving Ease DTRS [%]	Birth Wt. [kg]	200 Day Wt [kg]	400 Day Wt [kg]	600 Day Wt [kg]	Milk [kg]	Scrotal Size [cm]	Carcase Wt [kg]	Eye Muscle Area [sg cm]	Rib Fat [mm]	Rump Fat [mm]	Retail Beef Yield [%]	IMF [%]
EBV	-4.5	0.4	3.3	27	41	62	11	1.1	29	2.3	0.1	0.4	0.6	0.4
Acc	31%	28%	51%	55%	58%	66%	35%	66%	51%	42%	39%	39%	41%	30%

Sire BARANA EMOTION  
BARANA JURYMAN  
BARANA EVATT  
BARANA LINDEL  
BARANA ECHUCA  
BARANA GEMSTONE G112  
BREWERS HEIDI X316  
Dam SHAWACRES NACOBI  
BULLOCKHILLS BUSTER  
BULLOCKHILLS ERP P U4  
BARANA GEM  
BARANA ZULU  
BARANA DAVIS  
BARANA XTENT

## LOT 5

### BARANA ROCKY R046 (PP)

A/c: BARANA PASTORAL



**DOB** 23/08/2020

**Tattoo** PTCP R046

**Colour** Light Red

**Eye Pigment** 100/100

**Age** 22

**Comment:**

Thickset. Medium framed.

Heavy muscled. Easydoing.

Purchaser:

\$

#### May 2022 Simmental Trans Tasman Group Breedplan

	Calving Ease DIR [%]	Calving Ease DTRS [%]	Birth Wt. [kg]	200 Day Wt [kg]	400 Day Wt [kg]	600 Day Wt [kg]	Milk [kg]	Scrotal Size [cm]	Carcase Wt [kg]	Eye Muscle Area [sq cm]	Rib Fat [mm]	Rump Fat [mm]	Retail Beef Yield [%]	IMF [%]
EBV	-2.1	-3.2	2.2	20	34	45	13	0.2	24	3.8	-0.5	-0.2	2.2	-0.4
Acc	32%	33%	51%	52%	56%	64%	38%	66%	49%	43%	42%	41%	43%	34%

TOPWEIGHT DIRECTOR

WILLANDRA GOMEZ

WILLANDRA DIANA Z26

Sire WOONALLEE LOOKING GLASS

WOONALLEE BHR TORNADO

WOONALLEE VASTI G52

WOONALLEE VASTI C87

Dam BARANA MARLIE

WOONALLEE JUMBO

CHAMPS BRAVO

WOONALLEE KATHIE G73

BARANA EMOTION

BARANA KIM 2ND

BARANA BLYTHE

## LOT 6

### BARANA REGENT R053 (Pp)

A/c: BARANA PASTORAL



**DOB** 4/09/2020

**Tattoo** PTCP R053

**Colour** Red

**Eye Pigment** 100/000

**Age** 22

**Comment:**

Medium frame. Smooth

muscle pattern with soft skin.

Scurred.

Purchaser:

\$

#### May 2022 Simmental Trans Tasman Group Breedplan

	Calving Ease DIR [%]	Calving Ease DTRS [%]	Birth Wt. [kg]	200 Day Wt [kg]	400 Day Wt [kg]	600 Day Wt [kg]	Milk [kg]	Scrotal Size [cm]	Carcase Wt [kg]	Eye Muscle Area [sq cm]	Rib Fat [mm]	Rump Fat [mm]	Retail Beef Yield [%]	IMF [%]
EBV	-3.4	-1.9	3.7	27	47	72	12	1	32	1.4	-0.5	-0.2	1	0
Acc	35%	36%	55%	54%	57%	65%	43%	66%	50%	44%	43%	43%	44%	35%

TOPWEIGHT DIRECTOR

WILLANDRA GOMEZ

WILLANDRA DIANA Z26

Sire WOONALLEE LOOKING GLASS

WOONALLEE BHR TORNADO

WOONALLEE VASTI G52

WOONALLEE VASTI C87

Dam BARANA FERNANDA (P)

BULLOCKHILLS BUSTER (P) (AI)

SHAWACRES NACOBI (H) (ET)

BULLOCKHILLS ERP P U4

VINTAGE MAVERICK (P)

BARANA YELENA (P)

BARANA ROBERTA (H)

## LOT 7

### BARANA UNREGISTERED [P]

A/c: BARANA PASTORAL



**DOB** 6/10/2020

**Tattoo** PTCP R063

**Colour** Red

**Eye Pigment** 100/100

**Age** 21

**Comment:**

Smoother muscle pattern.

Easy calver. Soft skin.

Purchaser:

\$

Sire BARANA LINDEL PTCPL053 (PP)

Dam PUREBRED UNREGISTERED SIMMENTAL COW

## LOT 8

### BARANA RINGMASTER (Pp)

A/c: BARANA PASTORAL



**DOB** 11/09/2020

**Tattoo** PTCP R041

**Colour** Red

**Eye Pigment** 100/100

**Age** 21

**Comment:**

Slight pink eye in near side

eye. Had a set back at

weaning. Medium framed.

Thickset. Good lower thigh.

Stands nice & square.

Purchaser:

\$

#### May 2022 Simmental Trans Tasman Group Breedplan

	Calving Ease DIR [%]	Calving Ease DTRS [%]	Birth Wt. [kg]	200 Day Wt [kg]	400 Day Wt [kg]	600 Day Wt [kg]	Milk [kg]	Scrotal Size [cm]	Carcase Wt [kg]	Eye Muscle Area [sq cm]	Rib Fat [mm]	Rump Fat [mm]	Retail Beef Yield [%]	IMF [%]
EBV	-4.3	-1.9	3.7	30	50	72	13	1.1	35	3.2	-0.2	0	1.4	0.1
Acc	28%	25%	46%	52%	56%	64%	31%	65%	49%	40%	37%	37%	39%	28%

BARANA EMOTION

BARANA JURYMAN

BARANA EVATT

Sire BARANA LINDEL

BARANA ECHUCA

BARANA GEMSTONE G112

BREWERS HEIDI X316

CHAMPS BRAVO

WOONALLEE JUMBO

WOONALLEE KATHIE G73

Dam BARANA MARIGOLD M85

WATERFRONT FABIAN-F72

BARANA JASMINE 2ND

BARANA YONDER

LOT 9

BARANA REGIMENT R049 (Pp)  
A/c: BARANA PASTORAL




DOB 28/08/2020  
Tattoo PTCP R049  
Colour Dark tan  
Eye Pigment 100/100  
Age 22

Comment:  
Mid to later maturing bull.  
Stands on good feet & legs.  
Excellent length of body.

Purchaser:

\$

May 2022 Simmental Trans Tasman Group Breedplan														
	Calving Ease DIR [%]	Calving Ease DTRS [%]	Birth Wt. [kg]	200 Day Wt [kg]	400 Day Wt [kg]	600 Day Wt [kg]	Milk [kg]	Scrotal Size [cm]	Carcase Wt [kg]	Eye Muscle Area [sq cm]	Rib Fat [mm]	Rump Fat [mm]	Retail Beef Yield [%]	IMF [%]
EBV	-4.1	1	2.9	22	36	46	12	0.5	23	2.8	-0.6	-0.4	1.7	-0.1
Acc	32%	33%	52%	52%	56%	64%	38%	66%	49%	43%	41%	41%	42%	32%

TOPWEIGHT DIRECTOR  
WILLANDRA GOMEZ  
WILLANDRA DIANA Z26

WONALLEE LOOKING GLASS  
WONALLEE BHR TORNADO  
WONALLEE VASTI G52  
WONALLEE VASTI C87

Sire

Dam

BARANA EMOTION  
BARANA XIT  
BARANA ZULU  
BARANA BREAK UP  
BARANA ZENOBIA

CORINDADOWNS BUCKSHOT

LOT 10

BARANA RAMJET [H]  
A/c: BARANA PASTORAL




DOB 13/10/2020  
Tattoo PTC1 R074  
Colour Light Red  
Eye Pigment 100/100  
Age 20

Comment:  
Soft fine coat. Medium maturity muscle pattern.

Purchaser:

\$

May 2022 Simmental Trans Tasman Group Breedplan														
	Calving Ease DIR [%]	Calving Ease DTRS [%]	Birth Wt. [kg]	200 Day Wt [kg]	400 Day Wt [kg]	600 Day Wt [kg]	Milk [kg]	Scrotal Size [cm]	Carcase Wt [kg]	Eye Muscle Area [sq cm]	Rib Fat [mm]	Rump Fat [mm]	Retail Beef Yield [%]	IMF [%]
EBV	0.3	-3.7	0.7	19	33	41	11	-1.2	27	5	0.5	0.8	2.2	-0.1
Acc	36%	36%	55%	54%	57%	64%	42%	66%	51%	47%	45%	45%	46%	38%

CHAMPS ROMANO  
CHAMPS BRAVO  
VIRGINIA POLL BARBI SUE

WONALLEE JUMBO  
WONALLEE BHR TORNADO  
WONALLEE KATHIE G73  
WONALLEE KATHIE B111

Sire

Dam

BULLOCKHILLS BUSTER  
BULLOCKHILLS ERP P U4

SHAWACRES NACOBI

LOT 11

BARANA UNREGISTERED [P]  
A/C: BARANA PASTORAL



DOB 11/10/2020  
Tattoo PTCP R072  
Colour Dark Tan  
Eye Pigment 100/100  
Age 20

Comment:  
Compact early maturing bull.  
Strong sirey head. Very good hooding.

Purchaser:

\$

Sire

Dam

BARANA LINDEL PTCPL053 (PP)

PUREBRED UNREGISTERED SIMMENTAL COW

LOT 12

BARANA UNREGISTERED [P]  
A/C: BARANA PASTORAL



DOB 25/08/2020  
Tattoo PTCP R048  
Colour Red  
Eye Pigment 100/100  
Age 22

Comment:  
Shows good carcass characteristics. Would suit vealer production. Stands on medium frame.

Purchaser:

\$

Sire

Dam

BARANA LINDEL PTCPL053 (PP)

PUREBRED UNREGISTERED SIMMENTAL COW

## LOT 13

### MORNING RAMBO (PP)

A/c: MR K F & MRS H M MORN



**DOB** 1/08/2020

**Tattoo** MKHP R001

**Colour** Light Red

**Eye Pigment** 100/100

**Age** 23

**Comment:**

Younger bull. Thickset, deep-bodied with good lower thigh. Soft, heavy muscle pattern.

Purchaser:

\$

#### May 2022 Simmental Trans Tasman Group Breedplan

	Calving Ease DIR [%]	Calving Ease DTRS [%]	Birth Wt. [kg]	200 Day Wt [kg]	400 Day Wt [kg]	600 Day Wt [kg]	Milk [kg]	Scrotal Size [cm]	Carcase Wt [kg]	Eye Muscle Area [sg cm]	Rib Fat [mm]	Rump Fat [mm]	Retail Beef Yield [%]	IMF [%]
EBV	1.5	-5.5	1.2	24	35	43	12	-0.2	27	5.2	-0.4	-0.3	3.1	-0.6
Acc	39%	39%	51%	50%	52%	52%	44%	52%	46%	41%	42%	41%	41%	36%

CHAMPS ROMANO

CHAMPS BRAVO

VIRGINIA POLL BARBI SUE

WOONALLEE JUMBO

WOONALLEE BHR TORNADO

WOONALLEE KATHIE G73

WOONALLEE KATHIE B111

CHAMPS BRAVO

WOONALLEE JUMBO

WOONALLEE KATHIE G73

Dam MORNING POLLYANNA

BULLOCKHILLS BUSTER

MORNING GAIL

MORNING ALEX

## LOT 14

### BARANA ROMEO R040 (Pp)

A/c: BARANA PASTORAL



**DOB** 10/09/2020

**Tattoo** PTCP R040

**Colour** Red

**Eye Pigment** 100/100

**Age** 21

**Comment:**

Heavy muscle pattern. Soft fine coat. Freemoving bull.

Purchaser:

\$

#### May 2022 Simmental Trans Tasman Group Breedplan

	Calving Ease DIR [%]	Calving Ease DTRS [%]	Birth Wt. [kg]	200 Day Wt [kg]	400 Day Wt [kg]	600 Day Wt [kg]	Milk [kg]	Scrotal Size [cm]	Carcase Wt [kg]	Eye Muscle Area [sg cm]	Rib Fat [mm]	Rump Fat [mm]	Retail Beef Yield [%]	IMF [%]
EBV	-4.1	-2.2	3.1	28	45	61	13	0.9	32	3.6	-0.3	-0.1	1.6	0
Acc	29%	26%	48%	53%	58%	65%	28%	65%	50%	41%	38%	38%	40%	29%

BARANA EMOTION

BARANA JURYMAN

BARANA EVATT

BARANA ECHUCA

BARANA GEMSTONE G112

BREWERS HEIDI X316

CHAMPS BRAVO

WOONALLEE JUMBO

WOONALLEE KATHIE G73

Dam BARANA N016

BULLOCKHILLS BUSTER

BARANA FOOTSCRAY

BARANA VALERIAN

## LOT 15

### BARANA ANGUS UNREGISTERED [P]

A/c: BARANA PASTORAL



**DOB** 20/07/2020

**Tattoo** JXE R006

**Colour** Black

**Age** 23

**Comment:**

Deep barrelled. Thick set. Good carcase characteristics.

Purchaser:

\$

Sire DALWHINNIE M70 SV

Dam BARANA PUREBRED UNREGISTERED ANGUS COW JXEP004

## LOT 16

### BARANA ANGUS RAMBO R2 [P]

A/c: BARANA PASTORAL



**DOB** 28/06/2020

**Tattoo** JXE R2

**Colour** Black

**Age** 24

**Comment:**

Excellent length of body. Stands up nice & square. Good sirey head. Heavy muscle pattern.

Purchaser:

\$

#### May 2022 Angus Breedplan

	Calving Ease DIR [%]	Calving Ease DTRS [%]	Birth Wt. [kg]	200 Day Wt [kg]	400 Day Wt [kg]	600 Day Wt [kg]	Milk [kg]	Scrotal Size [cm]	Carcase Wt [kg]	Eye Muscle Area [sg cm]	Rib Fat [mm]	Rump Fat [mm]	Retail Beef Yield [%]	IMF [%]
EBV	0.6	1.8	5.5	47	90	120	17	2.9	66	4.1	-0.7	-0.6	0.7	1.6
Acc	44%	39%	58%	56%	55%	56%	50%	51%	52%	50%	55%	51%	53%	50%

TE MANIA EMPEROR E343PV

ASCOT HALLMARK H147PV

MILLAH MURRAH BRENDA

Sire DALWHINNIE M70SV

HINGAIA 469#

MILLAH MURRAH BRENDA F6PV

MILLAH MURRAH BRENDA Y33#

S A V 707 RITO 9969#

KANSAS JUDD J82SV

KANSAS LEAH E46#

Dam KANSAS DIANA L121SV

KANSAS CUSTER C58SV

KANSAS DIANA F146#

KANSAS DIANA A16#

LOT 17

BARANA ANGUS REYNOLD R1 [P]

A/C: BARANA PASTORAL



DOB 27/06/2020

Tattoo JXE R1

Colour Black

Age 24

Comment:

Excellent length. Deep rib. Strong head. Heavy smooth muscle pattern.

Purchaser:

\$

May 2022 Angus Breedplan														
	Calving Ease DIR [%]	Calving Ease DTRS [%]	Birth Wt. [kg]	200 Day Wt [kg]	400 Day Wt [kg]	600 Day Wt [kg]	Milk [kg]	Scrotal Size [cm]	Carcase Wt [kg]	Eye Muscle Area [sq cm]	Rib Fat [mm]	Rump Fat [mm]	Retail Beef Yield [%]	IMF [%]
EBV	2.7	0.8	5.3	47	80	115	18	3.3	62	6.2	-0.5	-0.6	1	2
Acc	46%	42%	57%	56%	57%	57%	52%	52%	54%	52%	56%	53%	55%	52%

TE MANIA EMPEROR E343PV

ASCOT HALLMARK H147PV

MILLAH MURRAH BRENDA

Sire DALWHINNIE M70SV

HINGAIA 469#

MILLAH MURRAH BRENDA F6PV

MILLAH MURRAH BRENDA Y33#

DUNOON EVIDENT E614PV

KANSAS EVIDENTLY J81SV

KANSAS ANNIE E109E

Dam BARANA RITA M002#

WK REPLAY#

KANSAS RITA G225#

KANSAS RITA Z172DV

LOT 18

BARANA ANGUS REX R16 [P]

A/C: BARANA PASTORAL



DOB 2/10/2020

Tattoo JXE R16

Colour Black

Age 21

Comment:

Compact. Early maturing. Silky soft skin. Suitable for heifers.

Purchaser:

\$

May 2022 Angus Breedplan														
	Calving Ease DIR [%]	Calving Ease DTRS [%]	Birth Wt. [kg]	200 Day Wt [kg]	400 Day Wt [kg]	600 Day Wt [kg]	Milk [kg]	Scrotal Size [cm]	Carcase Wt [kg]	Eye Muscle Area [sq cm]	Rib Fat [mm]	Rump Fat [mm]	Retail Beef Yield [%]	IMF [%]
EBV	2.2	1.6	4.7	45	83	116	18	2.7	63	4.9	0.6	0.3	0.2	1.8
Acc	45%	42%	57%	55%	56%	56%	51%	51%	53%	51%	56%	52%	54%	51%

TE MANIA EMPEROR E343PV

ASCOT HALLMARK H147PV

MILLAH MURRAH BRENDA

Sire DALWHINNIE M70SV

HINGAIA 469#

MILLAH MURRAH BRENDA F6PV

MILLAH MURRAH BRENDA Y33#

TUWHARETOA REGENT D145PV

KANSAS DATALINK J63SV

KANSAS ANNIE E98SV

Dam BARANA JEDDA M001#

THE GRANGE WHEEL WRIGHT D6PV

KANSAS JEDDA F191#

KANSAS JEDDA Y108#

LOT 19

BARANA ANGUS REGINALD R11 [P]

A/C: BARANA PASTORAL



DOB 5/09/2020

Tattoo JXE R11

Colour Black

Age 22

Comment:

Stands on good bone. Deep flanked. Deep ribbed. Showing good carcass characteristics.

Purchaser:

\$

May 2022 Angus Breedplan														
	Calving Ease DIR [%]	Calving Ease DTRS [%]	Birth Wt. [kg]	200 Day Wt [kg]	400 Day Wt [kg]	600 Day Wt [kg]	Milk [kg]	Scrotal Size [cm]	Carcase Wt [kg]	Eye Muscle Area [sq cm]	Rib Fat [mm]	Rump Fat [mm]	Retail Beef Yield [%]	IMF [%]
EBV	4.5	4.1	5.2	41	74	107	16	2.5	55	5.8	-1.5	-1.8	1.5	1.6
Acc	48%	43%	60%	58%	58%	60	55%	55%	55%	53%	58%	55%	55%	53%

TE MANIA EMPEROR E343PV

ASCOT HALLMARK H147PV

MILLAH MURRAH BRENDA F123PV

Sire DALWHINNIE M70SV

HINGAIA 469#

MILLAH MURRAH BRENDA F6PV

MILLAH MURRAH BRENDA Y33#

WK VEGAS#

WK REPLAY#

S A F PENELOPE P020#

Dam KANSAS JEDDA F195#

KANSAS RANCHER R6+96#

KANSAS JEDDA U50SV

KANSAS EASY JEDDA R90+96#

LOT 20

BARANA ANGUS UNREGISTERED [P]

A/C: BARANA PASTORAL



DOB 1/10/2020

Tattoo JXE R015

Colour Black

Age 21

Comment:

Very sound bull. Mobile. Has that length of body. Stands nice & square.

Purchaser:

\$

May 2022 Angus Breedplan														
	Calving Ease DIR [%]	Calving Ease DTRS [%]	Birth Wt. [kg]	200 Day Wt [kg]	400 Day Wt [kg]	600 Day Wt [kg]	Milk [kg]	Scrotal Size [cm]	Carcase Wt [kg]	Eye Muscle Area [sq cm]	Rib Fat [mm]	Rump Fat [mm]	Retail Beef Yield [%]	IMF [%]
EBV	2.2	1.6	4.7	45	83	116	18	2.7	63	4.9	0.6	0.3	0.2	1.8
Acc	45%	42%	57%	55%	56%	56%	51%	51%	53%	51%	56%	52%	54%	51%

TE MANIA EMPEROR E343PV

ASCOT HALLMARK H147PV

MILLAH MURRAH BRENDA

Sire DALWHINNIE M70 SV

HINGAIA 469#

MILLAH MURRAH BRENDA F6PV

MILLAH MURRAH BRENDA Y33#

TUWHARETOA REGENT D145PV

KANSAS DATALINK J63SV

KANSAS ANNIE E98SV

Dam BARANA JEDDA M001#

THE GRANGE WHEEL WRIGHT D6PV

KANSAS JEDDA F191#

KANSAS JEDDA Y108#

LOT 21

BARANA ANGUS RAYMOND R7 [P]  
A/C: BARANA PASTORAL



DOB 13/08/2020  
Tattoo JXE R7  
Colour Black  
Age 22

Comment:  
Bull suitable for heifers. Finer boned. Smooth muscle pattern. Soft skin type.

Purchaser:

\$

May 2022 Angus Breedplan														
	Calving Ease DIR [%]	Calving Ease DTRS [%]	Birth Wt. [kg]	200 Day Wt [kg]	400 Day Wt [kg]	600 Day Wt [kg]	Milk [kg]	Scrotal Size [cm]	Carcase Wt [kg]	Eye Muscle Area [sq cm]	Rib Fat [mm]	Rump Fat [mm]	Retail Beef Yield [%]	IMF [%]
EBV	2.9	5	4.1	58	75	105	18	2.6	55	4.2	1	1	-0.1	1.6
Acc	47%	42%	60%	58%	58%	59%	53%	53%	55%	53%	57%	55%	55%	53%

Sire

TE MANIA EMPEROR E343PV  
ASCOT HALLMARK H147PV  
MILLAH MURRAH BRENDA F123PV  
DALWHINNIE M70SV  
HINGAIA 469#  
MILLAH MURRAH BRENDA F6PV  
MILLAH MURRAH BRENDA Y33#

Dam

HYLINE RIGHT TIME 338#  
THE GRANGE WHEEL WRIGHT D6PV  
IMRAN MISS VEGAS U20#  
KANSAS JEDDA F191#  
YTHANBRAE THE DON W57#  
KANSAS JEDDA Y108#  
KANSAS JEDDA U50SV

LOT 22

BARANA ANGUS ROCHESTER R14 [P]  
A/C: BARANA PASTORAL



DOB 29/09/2020  
Tattoo JXE R14  
Colour Black  
Age 21

Comment:  
Slight pink eye in near side eye. Early maturing type. Good carcass characteristics.

Purchaser:

\$

May 2022 Angus Breedplan														
	Calving Ease DIR [%]	Calving Ease DTRS [%]	Birth Wt. [kg]	200 Day Wt [kg]	400 Day Wt [kg]	600 Day Wt [kg]	Milk [kg]	Scrotal Size [cm]	Carcase Wt [kg]	Eye Muscle Area [sq cm]	Rib Fat [mm]	Rump Fat [mm]	Retail Beef Yield [%]	IMF [%]
EBV	4.3	4	5.3	45	84	117	18	2.9	62	5.1	-1.1	-0.7	1.1	2.1
Acc	45%	40%	57%	56%	56%	57%	50%	51%	55%	53%	57%	54%	55%	53%

Sire

TE MANIA EMPEROR E343PV  
ASCOT HALLMARK H147PV  
MILLAH MURRAH BRENDA F123PV  
DALWHINNIE M70SV  
HINGAIA 469#  
MILLAH MURRAH BRENDA F6PV  
MILLAH MURRAH BRENDA Y33#

Dam

KANSAS JUDD J82SV  
KANSAS JUDD L76SV  
KANSAS RITA G225#  
BARANA JEDDA N6#  
WK REPLAY#  
KANSAS JEDDA F195#  
KANSAS JEDDA U50SV

LOT 23

BARANA SHORTHORN ROMAN [P]  
A/C: BARANA PASTORAL



DOB 23/08/2020  
Tattoo PDC R023  
Colour Red  
Age 22

Comment:  
Thick, soft deep barrelled bull displaying excellent carcass characteristics. Early to mid maturity pattern. Stands on good bone.

Purchaser:

\$

May 2022 Shorthorn Breedplan														
	CE	BW	WW	YW	Milk	MCE	MWWT	STAY	DOC	CW	REA	FAT	MARB	YG
EBV	7.9	3.9	57.5	85.6	29.4	5.0	58.2	8.7	6.3	9.7	0.42	-0.075	0.03	-0.32
Acc	11%	12%	11%	11%	5%	6%	7%	7%	8%	13%	12%	15%	17%	12%

Sire

JOBWE18 (HBR)(P) MARELLAN EMERALD  
GLSF19 (HBR)(P) SPRYS SUPER STAR F19  
M9XZ57 (HBR)(P) NEEARRA JUDITH 104  
DCMK13 (HBR)(P) TARRAGANDA SS KIDSON K13  
SC Y157 (HBR)(P) SOUTHCOTE YALE Y157  
DCME4 (HBR)(P) TARRAGANDA SYLVIA 8TH E4  
DCMZ11 (HBR)(P) TARRAGANDA NL SYLVIAS CHOICE 3

Dam

GLSF19 (HBR)(P) SPRYS SUPER STAR F19  
DCMK13 (HBR)(P) TARRAGANDA SS KIDSON K13  
DCME4 (HBR)(P) TARRAGANDA SYLVIA 8TH E4  
PDCN026 (HBR)(P) BARANA GOONDAH KIM 27TH  
YY D176 (HBR)(P) YAMBURGAN POSEIDON D176  
PDCH008 (HBR)(P) BARANA GOONDAH KIM 6TH  
PDCE005 (HBR)(P) BARANA GOONDAH KIM 4TH E005

LOT 24

BARANA ROMAN R026 (PP)  
A/C: BARANA PASTORAL



DOB 30/07/2020  
Tattoo PTCP R026  
Colour Red  
Eye Pigment 100/100  
Age 23

Comment:  
Well put together bull that had a bit of a set back. Medium frame. Smooth muscle pattern.

Purchaser:

\$

May 2022 Simmental Trans Tasman Group Breedplan														
	Calving Ease DIR [%]	Calving Ease DTRS [%]	Birth Wt. [kg]	200 Day Wt [kg]	400 Day Wt [kg]	600 Day Wt [kg]	Milk [kg]	Scrotal Size [cm]	Carcase Wt [kg]	Eye Muscle Area [sq cm]	Rib Fat [mm]	Rump Fat [mm]	Retail Beef Yield [%]	IMF [%]
EBV	0.1	-1.9	1.1	13	19	31	12	0.3	11	0.6	1.2	2.1	-0.5	0.3
Acc	32%	32%	51%	52%	55%	63%	38%	65%	48%	42%	41%	40%	41%	32%

Sire

TOPWEIGHT DIRECTOR  
WILLANDRA GOMEZ  
WILLANDRA DIANA Z26  
WOONALLEE LOOKING GLASS  
WOONALLEE BHR TORNADO  
WOONALLEE VASTI G52  
WOONALLEE VASTI C87

Dam

BAR 5 SA ELTORRO 814S  
CALLENDALE JASPER  
CALLENDALE FAITH  
BARANA MADI  
BULLOCKHILLS BUSTER  
BARANA ELEANOR  
BARANA ZERA

**LOT 25****BARANA ROB ROY R071 (PP)**

A/c: BARANA PASTORAL

**DOB** 11/10/2020**Tattoo** PTCP R071**Colour** Light Red**Eye Pigment** 100/000**Age** 20**Comment:**

Younger bull. Soft medium muscle pattern.

Purchaser:

\$

May 2022 Simmental Trans Tasman Group Breedplan

	Calving Ease DIR [%]	Calving Ease DTRS [%]	Birth Wt. [kg]	200 Day Wt [kg]	400 Day Wt [kg]	600 Day Wt [kg]	Milk [kg]	Scrotal Size [cm]	Carcase Wt [kg]	Eye Muscle Area [sq cm]	Rib Fat [mm]	Rump Fat [mm]	Retail Beef Yield [%]	IMF [%]
EBV	2.8	-3.3	0.6	16	20	28	9	-0.4	14	3	0.4	0.9	1.2	-0.3
Acc	34%	34%	52%	54%	57%	63%	42%	64%	50%	44%	42%	42%	43%	35%

CHAMPS ROMANO

BAR 5 SA ELTORRO 814S

CHAMPS BRAVO

CALLENDALE JASPER

VIRGINIA POLL BARBI SUE

CALLENDALE FAITH

Sire WOONALLEE JUMBO

Dam

BARANA MASEY

ROWLON PARK EXTRA 247

WOONALLEE KATHIE G73

BARANA Z025

WOONALLEE KATHIE B111

BARANA UNDERSSELL

**LOT 26****BARANA ROCCO (PP)**

A/c: BARANA PASTORAL

**DOB** 14/09/2020**Tattoo** PTCP R057**Colour** Light Red**Eye Pigment** 100/100**Age** 21**Comment:**

Early maturing type. Thickset.

Purchaser:

\$

May 2022 Simmental Trans Tasman Group Breedplan

	Calving Ease DIR [%]	Calving Ease DTRS [%]	Birth Wt. [kg]	200 Day Wt [kg]	400 Day Wt [kg]	600 Day Wt [kg]	Milk [kg]	Scrotal Size [cm]	Carcase Wt [kg]	Eye Muscle Area [sq cm]	Rib Fat [mm]	Rump Fat [mm]	Retail Beef Yield [%]	IMF [%]
EBV	-1.5	-2.4	2	20	31	39	13	0	20	2.9	-0.7	-0.5	2.1	-0.5
Acc	33%	34%	52%	52%	57%	65%	36%	66%	50%	44%	42%	42%	43%	34%

TOPWEIGHT DIRECTOR

CHAMPS BRAVO

WILLANDRA GOMEZ

WOONALLEE JUMBO

WILLANDRA DIANA Z26

WOONALLEE KATHIE G73

Sire WOONALLEE LOOKING GLASS

Dam

BARANA NADINE

BULLOCKHILLS BUSTER

WOONALLEE BHR TORNADO

BARANA EVA 2ND

WOONALLEE VASTI G52

BARANA BERNADETTE

WOONALLEE VASTI C87

**LOT 27****BARANA ROCKEFELLER (Pp)**

A/c: BARANA PASTORAL

**DOB** 7/08/2020**Tattoo** PTCP R038**Colour** Tan**Eye Pigment** 100/100**Age** 23**Comment:**

Would suit vealer production. Smooth heavy muscle. Showing good carcass characteristics.

Purchaser:

\$

May 2022 Simmental Trans Tasman Group Breedplan

	Calving Ease DIR [%]	Calving Ease DTRS [%]	Birth Wt. [kg]	200 Day Wt [kg]	400 Day Wt [kg]	600 Day Wt [kg]	Milk [kg]	Scrotal Size [cm]	Carcase Wt [kg]	Eye Muscle Area [sq cm]	Rib Fat [mm]	Rump Fat [mm]	Retail Beef Yield [%]	IMF [%]
EBV	0.8	-4.4	1.9	27	39	52	12	-0.8	30	4.8	-0.3	-0.1	2.8	-0.6
Acc	38%	39%	57%	60%	65%	71%	46%	73%	58%	52%	50%	50%	51%	42%

CHAMPS ROMANO

CHAMPS BRAVO

CHAMPS BRAVO

WOONALLEE JUMBO

VIRGINIA POLL BARBI SUE

WOONALLEE KATHIE G73

Sire WOONALLEE JUMBO

Dam

BARANA NOVOTEL

WOONALLEE BHR TORNADO

BARANA EMOTION

WOONALLEE KATHIE G73

BARANA KENDRA

WOONALLEE KATHIE B111

BARANA EGGNOG

**LOT 28****MORNING REGENT (Pp)**

A/c: MR K F &amp; MRS H M MORN

**DOB** 31/10/2020**Tattoo** MKHP R004**Colour** Dark Red**Eye Pigment** 100/100**Age** 20**Comment:**

Stands wide from behind. Early to mid maturity muscle pattern.

Purchaser:

\$

May 2022 Simmental Trans Tasman Group Breedplan

	Calving Ease DIR [%]	Calving Ease DTRS [%]	Birth Wt. [kg]	200 Day Wt [kg]	400 Day Wt [kg]	600 Day Wt [kg]	Milk [kg]	Scrotal Size [cm]	Carcase Wt [kg]	Eye Muscle Area [sq cm]	Rib Fat [mm]	Rump Fat [mm]	Retail Beef Yield [%]	IMF [%]
EBV	0.1	-5.6	1.6	25	37	44	13	-0.2	28	5.5	-0.5	-0.3	3.2	-0.6
Acc	38%	39%	51%	53%	53%	53%	45%	51%	46%	41%	41%	41%	41%	36%

CHAMPS ROMANO

CHAMPS BRAVO

CHAMPS BRAVO

WOONALLEE JUMBO

VIRGINIA POLL BARBI SUE

WOONALLEE KATHIE G73

Sire WOONALLEE JUMBO

Dam

MORNING MELODY

WOONALLEE BHR TORNADO

WATERFRONT FABIAN-F72

WOONALLEE KATHIE G73

MORNING KEIRA

WOONALLEE KATHIE B111

MORNING GAIL

LOT 29

BARANA COMMERCIAL [P]  
A/c: BARANA PASTORAL



**DOB** 3/09/2020  
**Tattoo** PTCP R200  
**Colour** Tan  
**Eye Pigment** 100/100  
**Age** 22

**Comment:**  
Excellent length & muscle development. Would be an easy calving bull.

Purchaser:

\$

Sire

PUREBRED UNREGISTERED SIMMENTAL BULL

Dam

PUREBRED UNREGISTERED SIMMENTAL COW

LOT 30

MORNING SILVERADO (H)  
A/c: MR K F & MRS H M MORN



**DOB** 21/02/2021  
**Tattoo** MKHP S001  
**Colour** Tan  
**Eye Pigment**  
**Age** 16

**Comment:**  
First progeny of Willandra Panama [P]. Younger bull. Good depth of body. Length. Heavy carcase characteristics. Showing that dapple in his coat. Mid maturity pattern.

Purchaser:

\$

Sire

WOONALLEE FLAMBOYANT  
TOPWEIGHT JACK ARTA  
TOPWEIGHT BETTINA 333  
WILLANDRA PANAMA  
MAJ ROBO  
WILLANDRA OLIVE B70  
QUAINDERING OLIVE V19

Dam

SHAWACRES NACOBI  
BULLOCKHILLS BUSTER  
BULLOCKHILLS ERP P U4  
MORNING EYVONE  
VINTAGE MAVERICK  
MORNING ZELMA  
BARANA SHANNON+97

LOT 31

BARANA ROSSCO (PP)  
A/c: BARANA PASTORAL




**DOB** 8/10/2020  
**Tattoo** PTCPR065  
**Colour** Tan  
**Eye Pigment** 100/50  
**Age** 21

**Comment:**  
Lost his mum so hasn't quite got the growth rate. Once again has that compact, heavy smooth muscle pattern. Suit vealer production.

Purchaser:

\$

May 2022 Simmental Trans Tasman Group Breedplan														
	Calving Ease DIR [%]	Calving Ease DTRS [%]	Birth Wt. [kg]	200 Day Wt [kg]	400 Day Wt [kg]	600 Day Wt [kg]	Milk [kg]	Scrotal Size [cm]	Carcase Wt [kg]	Eye Muscle Area [sq cm]	Rib Fat [mm]	Rump Fat [mm]	Retail Beef Yield [%]	IMF [%]
EBV	1.8	-3.3	0.8	20	29	31	11	-0.1	22	5.1	-0.4	-0.2	2.8	-0.5
Acc	34%	34%	51%	53%	58%	64%	41%	67%	51%	47%	45%	45%	46%	37%

CHAMPS ROMANO  
CHAMPS BRAVO  
VIRGINIA POLL BARBI SUE  
WOONALLEE JUMBO  
WOONALLEE BHR TORNADO  
WOONALLEE KATHIE G73  
WOONALLEE KATHIE B111

WOONALLEE JUMBO  
BARANA MUHAMMAD  
BARANA ELDERSLIE  
BARANA PAISLEY 2ND  
CALLENDALE JASPER  
BARANA MIRIAM  
BARANA GAYE

LOT 32

BARANA SILVERADO (Pp)  
A/c: BARANA PASTORAL




**DOB** 8/03/2021  
**Tattoo** PTCP S012  
**Colour** Red/White  
**Eye Pigment** 0/0  
**Age** 16

**Comment:**  
Stands nice & square. Deep ribbed. Deep flanked. Soft as butter.

Purchaser:

\$

May 2022 Simmental Trans Tasman Group Breedplan														
	Calving Ease DIR [%]	Calving Ease DTRS [%]	Birth Wt. [kg]	200 Day Wt [kg]	400 Day Wt [kg]	600 Day Wt [kg]	Milk [kg]	Scrotal Size [cm]	Carcase Wt [kg]	Eye Muscle Area [sq cm]	Rib Fat [mm]	Rump Fat [mm]	Retail Beef Yield [%]	IMF [%]
EBV	-1.6	-1	3	29	49	61	11	0.9	34	3.8	-0.8	-0.8	2.2	-0.3
Acc	32%	33%	50%	55%	62%	55%	37%	64%	49%	44%	41%	41%	43%	32%

WOONALLEE FLAMBOYANT  
TOPWEIGHT JACK ARTA  
TOPWEIGHT BETTINA 333  
WILLANDRA PANAMA  
MAJ ROBO  
WILLANDRA OLIVE B70  
QUAINDERING OLIVE V19

CHAMPS BRAVO  
WOONALLEE JUMBO  
WOONALLEE KATHIE G73  
WATERFRONT FABIAN-F72  
BARANA BONNIE

LOT 33



BARANA UNREGISTERED [S]

A/c: BARANA PASTORAL

DOB 22/02/2021

Tattoo PTCP S006

Colour Light Red

Eye Pigment 100/100

Age 16


Comment:

Has been a standout since birth. Tremendous depth of body lower thigh. Strong sirey head. Stands nice & square. Has a presence about him.

Purchaser:

\$

LOT 35



BARANA SAM (H)

A/c: BARANA PASTORAL

DOB 24/02/2021

Tattoo PTCP S009

Colour Dark Tan

Eye Pigment 100/100

Age 16

Comment:

Tremendous length & depth of body. Good strong topline. Out of a very good old breeding cow.

Purchaser:

\$

May 2022 Simmental Trans Tasman Group Breedplan																									
	Calving Ease DIR [%]	Calving Ease DTRS [%]	Birth Wt. [kg]	200 Day Wt [kg]	400 Day Wt [kg]	600 Day Wt [kg]	Milk [kg]	Scrotal Size [cm]	Carcase Wt [kg]	Eye Muscle Area [sg cm]	Rib Fat [mm]	Rump Fat [mm]	Retail Beef Yield [%]	IMF [%]											
EBV	-1.7	1.8	2.7	28	44	63	10	1.8	33	3.1	-0.1	0.2	1.1	0.2											
Acc	37%	39%	55%	57%	62%	56%	41%	64%	50%	45%	43%	43%	45%	34%											
Woonallee Flamboyant							Shawacres Nacobi																		
Topweight Jack Art							Bullockhills Buster																		
Topweight Bettina 333							Bullockhills ERP P U4																		
Sire	Willandra Panama AJYPP164 [P]						Dam	PUREBRED UNREGISTERED SIMMENTAL COW PTCPM064																	
MAJ ROBO							Wondenia Taurus																		
Willandra Olive B70							Barana Valerian																		
Quaindering Olive V19							Barana Quadros																		

LOT 34



BARANA STILLMAN (Pp)

A/c: BARANA PASTORAL

DOB 17/02/2021

Tattoo PTCP S008

Colour Light Red

Eye Pigment 100/100


Age 16


Comment:

Big barrelled heavy thickset. Excellent length of body & muscle development. Out of a very good breeding cow. Soft fine skin.

Purchaser:

\$

May 2022 Simmental Trans Tasman Group Breedplan														
	Calving Ease DIR [%]	Calving Ease DTRS [%]	Birth Wt. [kg]	200 Day Wt [kg]	400 Day Wt [kg]	600 Day Wt [kg]	Milk [kg]	Scrotal Size [cm]	Carcase Wt [kg]	Eye Muscle Area [sg cm]	Rib Fat [mm]	Rump Fat [mm]	Retail Beef Yield [%]	IMF [%]
EBV	1.5	0.9	1.1	18	25	36	7	0.2	19	2.8	0.3	0.7	0.7	0.1
Acc	31%	32%	50%	54%	60%	54%	36%	63%	48%	43%	39%	39%	42%	30%
Woonallee Flamboyant														
Bar 5 SA Eltorro 814S														
Topweight Jack Arta														
Callendale Jasper														
Topweight Bettina 333														
Callendale Faith														
Sire	Willandra Panama						Dam	Barana Madeleine						
	MAJ ROBO							Gowrie Yankee						
	Willandra Olive B70							Barana Camellia						
	Quaindering Olive V19							Barana Zarita						

May 2022 Simmental Trans Tasman Group Breedplan														
	Calving Ease DIR [%]	Calving Ease DTRS [%]	Birth Wt. [kg]	200 Day Wt [kg]	400 Day Wt [kg]	600 Day Wt [kg]	Milk [kg]	Scrotal Size [cm]	Carcase Wt [kg]	Eye Muscle Area [sg cm]	Rib Fat [mm]	Rump Fat [mm]	Retail Beef Yield [%]	IMF [%]
EBV	-1.7	1.8	2.7	28	44	63	10	1.8	33	3.1	-0.1	0.2	1.1	0.2
Acc	37%	39%	55%	57%	62%	56%	41%	64%	50%	45%	43%	43%	45%	34%
Woonallee Flamboyant														
Shawacres Nacobi														
Topweight Jack Arta														
Bullockhills Buster														
Topweight Bettina 333														
Bullockhills ERP P U4														
Sire	Willandra Panama						Dam	Barana Footscray						
	MAJ ROBO							Wondenia Taurus						
	Willandra Olive B70							Barana Valerian						
	Quaindering Olive V19							Barana Quadros						

LOT 36



BARANA SYLVESTER (Pp)

A/c: BARANA PASTORAL

DOB 24/03/2021

Tattoo PTC2S017

Colour Dark Tan

Eye Pigment 100/100


Age 15

Comment:

Bull showing heavy carcass characteristics. Early maturing. Produce those high yielding cattle. Out of a very good cow.

Purchaser:

\$

May 2022 Simmental Trans Tasman Group Breedplan														
	Calving Ease DIR [%]	Calving Ease DTRS [%]	Birth Wt. [kg]	200 Day Wt [kg]	400 Day Wt [kg]	600 Day Wt [kg]	Milk [kg]	Scrotal Size [cm]	Carcase Wt [kg]	Eye Muscle Area [sg cm]	Rib Fat [mm]	Rump Fat [mm]	Retail Beef Yield [%]	IMF [%]
EBV	1.8	-0.2	0.6	17	28	39	8	0.2	22	3.2	-0.3	-0.1	1.3	0.3
Acc	29%	30%	47%	51%	58%	51%	33%	63%	46%	42%	39%	39%	41%	30%
Woonallee Flamboyant														
Bar 5 SA Eltorro 814S														
Topweight Jack Arta														
Callendale Jasper														
Topweight Bettina 333														
Callendale Faith														
Sire	Willandra Panama						Dam	Barana M025						
	MAJ ROBO							Barana Edgeworth						
	Willandra Olive B70							Barana H125						
	Quaindering Olive V19													

LOT 37

BARANA SPARK (Pp)  
A/c: BARANA PASTORAL




DOB 12/03/2021  
Tattoo PTCP S015  
Colour Light Tan  
Eye Pigment 100/100  
Age 15

Comment:  
Medium framed. Stands on good bone. Typical of the Panama progeny. Soft muscle pattern.

Purchaser:

\$

May 2022 Simmental Trans Tasman Group Breedplan														
	Calving Ease DIR [%]	Calving Ease DTRS [%]	Birth Wt. [kg]	200 Day Wt [kg]	400 Day Wt [kg]	600 Day Wt [kg]	Milk [kg]	Scrotal Size [cm]	Carcase Wt [kg]	Eye Muscle Area [sq cm]	Rib Fat [mm]	Rump Fat [mm]	Retail Beef Yield [%]	IMF [%]
EBV	1.3	0.1	1.6	23	34	47	8	0.3	28	4.3	-0.8	-0.7	2.5	-0.4
Acc	32%	33%	51%	55%	62%	55%	37%	64%	49%	44%	41%	41%	43%	32%

WOONALLEE FLAMBOYANT  
TOPWEIGHT JACK ARTA  
TOPWEIGHT BETTINA 333

Sire

WILLANDRA PANAMA  
MAJ ROBO  
WILLANDRA OLIVE B70  
QUAINDERING OLIVE V19

Dam

BARANA NAPOLI  
BARANA FLEUR

CHAMPS BRAVO  
WOONALLEE JUMBO  
WOONALLEE KATHIE G73  
BANDEEKA POLL COSSACK  
BARANA ZILA

LOT 38

BARANA SULLIVAN (Pp)  
A/c: BARANA PASTORAL




DOB 18/04/2021  
Tattoo PTCP S024  
Colour Tan  
Eye Pigment 100/100  
Age 14

Comment:  
Similar to characteristics to previous lot. Might show a bit more length of body.

Purchaser:

\$

May 2022 Simmental Trans Tasman Group Breedplan														
	Calving Ease DIR [%]	Calving Ease DTRS [%]	Birth Wt. [kg]	200 Day Wt [kg]	400 Day Wt [kg]	600 Day Wt [kg]	Milk [kg]	Scrotal Size [cm]	Carcase Wt [kg]	Eye Muscle Area [sq cm]	Rib Fat [mm]	Rump Fat [mm]	Retail Beef Yield [%]	IMF [%]
EBV	-1.4	0.2	2.6	25	41	57	11	1.1	29	2.9	-0.7	-0.5	1.7	-0.1
Acc	32%	33%	44%	44%	44%	44%	36%	29%	38%	31%	31%	31%	31%	25%

WOONALLEE FLAMBOYANT  
TOPWEIGHT JACK ARTA  
TOPWEIGHT BETTINA 333

Sire

WILLANDRA PANAMA  
MAJ ROBO  
WILLANDRA OLIVE B70  
QUAINDERING OLIVE V19

Dam

BARANA PAULA  
BARANA EVETTA

WILLANDRA GOMEZ  
WOONALLEE LOOKING GLASS  
WOONALLEE VASTI G52  
BAR 5 P SA EVOLUTION 418S  
BARANA XTENT

LOT 39

BARANA SCOTT (P)  
A/c: BARANA PASTORAL




DOB 20/04/2021  
Tattoo PTCP S096  
Colour Blonde  
Eye Pigment 100/100  
Age 14

Comment:  
Dam is one of our better breeding old cows. Soft. Thickset. Good skin type.

Purchaser:

\$

May 2022 Simmental Trans Tasman Group Breedplan														
	Calving Ease DIR [%]	Calving Ease DTRS [%]	Birth Wt. [kg]	200 Day Wt [kg]	400 Day Wt [kg]	600 Day Wt [kg]	Milk [kg]	Scrotal Size [cm]	Carcase Wt [kg]	Eye Muscle Area [sq cm]	Rib Fat [mm]	Rump Fat [mm]	Retail Beef Yield [%]	IMF [%]
EBV	-2.2	-3	2.5	22	38	50	6	0.6	25	2.7	-0.7	-0.8	1.3	
Acc	35%	37%	51%	50%	50%	49%	42%	31%	41%	30%	30%	29%	30%	

WOONALLEE FLAMBOYANT  
TOPWEIGHT JACK ARTA  
TOPWEIGHT BETTINA 333

Sire

WILLANDRA PANAMA  
MAJ ROBO  
WILLANDRA OLIVE B70  
QUAINDERING OLIVE V19

Dam

GOWRIE YANKEE  
BARANA BUFFY  
YARLOOP XONE

GOLDPARK LANGLEY  
G.O.W. RIAH  
WEST COAST TONTO  
YARLOOP QUEEN APRIL

LOT 40

BARANA STYLES (H)  
A/c: BARANA PASTORAL




DOB 14/04/2021  
Tattoo PTCP S022  
Colour Red  
Eye Pigment 100/100  
Age 14

Comment:  
Excellent length. Smooth muscle development.

Purchaser:

\$

May 2022 Simmental Trans Tasman Group Breedplan														
	Calving Ease DIR [%]	Calving Ease DTRS [%]	Birth Wt. [kg]	200 Day Wt [kg]	400 Day Wt [kg]	600 Day Wt [kg]	Milk [kg]	Scrotal Size [cm]	Carcase Wt [kg]	Eye Muscle Area [sq cm]	Rib Fat [mm]	Rump Fat [mm]	Retail Beef Yield [%]	IMF [%]
EBV	-1.4	-1.6	2.2	24	38	48	9	-0.3	26	3.1	-0.6	-0.6	1.7	-0.3
Acc	32%	33%	50%	55%	61%	56%	36%	64%	49%	45%	41%	41%	44%	32%

WOONALLEE FLAMBOYANT  
TOPWEIGHT JACK ARTA  
TOPWEIGHT BETTINA 333

Sire

WILLANDRA PANAMA  
MAJ ROBO  
WILLANDRA OLIVE B70  
QUAINDERING OLIVE V19

Dam

WOONALLEE JUMBO  
BARANA MAREEN  
BARANA HICKORY

CHAMPS BRAVO  
WOONALLEE KATHIE G73  
BARANA ECHUCA  
BARANA BANAN

## LOT 41

### BARANA STEVEN (Pp) (TW)

A/c: BARANA PASTORAL



**DOB** 2/03/2021

**Tattoo** PTCP S013

**Colour** Light Red

**Eye Pigment** 100/100

**Age** 16

**Comment:**

Smoother muscle pattern bull.  
Would be an easy calver.

Purchaser:

\$

May 2022 Simmental Trans Tasman Group Breedplan

	Calving Ease DIR [%]	Calving Ease DTRS [%]	Birth Wt. [kg]	200 Day Wt [kg]	400 Day Wt [kg]	600 Day Wt [kg]	Milk [kg]	Scrotal Size [cm]	Carcase Wt [kg]	Eye Muscle Area [sq cm]	Rib Fat [mm]	Rump Fat [mm]	Retail Beef Yield [%]	IMF [%]
EBV	-0.3	-1	2.3	27	43	57	10	0.5	32	3.8	-0.5	-0.3	1.9	-0.2
Acc	32%	33%	45%	47%	48%	47%	37%	31%	41%	32%	32%	32%	32%	26%

WOONALLEE FLAMBOYANT

TOPWEIGHT JACK ARTA

TOPWEIGHT BETTINA 333

Sire WILLANDRA PANAMA

MAJ ROBO

WILLANDRA OLIVE B70

QUAINDERING OLIVE V19

Dam

WOONALLEE JUMBO

CHAMPS BRAVO

WOONALLEE KATHIE G73

BARANA NADIA 3RD

BULLOCKHILLS BUSTER

BARANA ENTERTAINER

BARANA BANAN

## LOT 42

### BARANA RIZZO (P)

A/c: BARANA PASTORAL



**DOB** 12/02/2020

**Tattoo** PTCPR003

**Colour** Tan

**Eye Pigment** 100/100

**Age** 28

**Comment:**

Very square functional heifer.  
Thickset. Wide based. Plenty of capacity. Joined 1/10/2021 to Wormbete Romeo R8. PTIC. DNA verification to sire pending.

Purchaser:

\$

May 2022 Simmental Trans Tasman Group Breedplan

	Calving Ease DIR [%]	Calving Ease DTRS [%]	Birth Wt. [kg]	200 Day Wt [kg]	400 Day Wt [kg]	600 Day Wt [kg]	Milk [kg]	Scrotal Size [cm]	Carcase Wt [kg]	Eye Muscle Area [sq cm]	Rib Fat [mm]	Rump Fat [mm]	Retail Beef Yield [%]	IMF [%]
EBV	-4	-2.8	2.9	25	44	61	15	0.9	30	2.9	-0.3	0	1.7	-0.2
Acc	33%	33%	46%	44%	47%	46%	35%	42%	39%	32%	33%	33%	33%	28%

TOPWEIGHT DIRECTOR

WILLANDRA GOMEZ

WILLANDRA DIANA Z26

Sire WOONALLEE LOOKING GLASS

WOONALLEE BHR TORNADO

WOONALLEE VASTI G52

WOONALLEE VASTI C87

Dam

WOONALLEE JUMBO

CHAMPS BRAVO

WOONALLEE KATHIE G73

BARANA NASTASIA

BARANA ECHUCA

BARANA GEMSTONE G112

BREWERS HEIDI X316

## LOT 43

### BARANA RAYNA R052 (PP)

A/c: BARANA PASTORAL



**DOB** 3/09/2020

**Tattoo** PTCPR052

**Colour** Light Red

**Eye Pigment** 100/100

**Age** 22

**Comment:**

Excellent & depth of body.  
Very sound. Good angle to hock. Will make a great dam. Joined 1/10/2021 to Wormbete Romeo R8. PTIC.

Purchaser:

\$

May 2022 Simmental Trans Tasman Group Breedplan

	Calving Ease DIR [%]	Calving Ease DTRS [%]	Birth Wt. [kg]	200 Day Wt [kg]	400 Day Wt [kg]	600 Day Wt [kg]	Milk [kg]	Scrotal Size [cm]	Carcase Wt [kg]	Eye Muscle Area [sq cm]	Rib Fat [mm]	Rump Fat [mm]	Retail Beef Yield [%]	IMF [%]
EBV	-3.2	-0.1	2.7	21	33	49	12	1	20	1.6	-0.1	0.2	0.9	0.1
Acc	33%	35%	47%	46%	47%	47%	40%	41%	40%	31%	32%	32%	32%	27%

TOPWEIGHT DIRECTOR

WILLANDRA GOMEZ

WILLANDRA DIANA Z26

Sire WOONALLEE LOOKING GLASS

WOONALLEE BHR TORNADO

WOONALLEE VASTI G52

WOONALLEE VASTI C87

BARANA EMOTION

CORINDADOWNS BUCKSHOT

BARANA XIT

Dam BARANA KENDRA

BULLOCKHILLS BUSTER

BARANA EGGNOG

BARANA BAY

## LOT 44

### BARANA RAISA R056 (PP)

A/c: BARANA PASTORAL



**DOB** 11/09/2020

**Tattoo** PTCPR056

**Colour** Red

**Eye Pigment** 100/100

**Age** 21

**Comment:**

Very similar heifer to last lot.  
Once again a female who is very sound & productive. Joined 1/10/2021 to Wormbete Romeo R8. PTIC.

Purchaser:

\$

May 2022 Simmental Trans Tasman Group Breedplan

	Calving Ease DIR [%]	Calving Ease DTRS [%]	Birth Wt. [kg]	200 Day Wt [kg]	400 Day Wt [kg]	600 Day Wt [kg]	Milk [kg]	Scrotal Size [cm]	Carcase Wt [kg]	Eye Muscle Area [sq cm]	Rib Fat [mm]	Rump Fat [mm]	Retail Beef Yield [%]	IMF [%]
EBV	-0.9	-0.6	2.4	23	39	53	14	0.9	26	2.7	-0.2	0.2	1.6	-0.2
Acc	32%	33%	45%	42%	42%	43%	38%	41%	37%	31%	33%	32%	32%	28%

TOPWEIGHT DIRECTOR

WILLANDRA GOMEZ

WILLANDRA DIANA Z26

Sire WOONALLEE LOOKING GLASS

WOONALLEE BHR TORNADO

WOONALLEE VASTI G52

WOONALLEE VASTI C87

WOONALLEE JUMBO

CHAMPS BRAVO

WOONALLEE KATHIE G73

Dam BARANA PRESCOTT

BANDEKA POLL COSSACK

BARANA FLANNEL

BARANA BERANGER

## LOT 45

### BARANA RIO R078 (Pp)

A/c: BARANA PASTORAL



**DOB** 28/10/2020  
**Tattoo** PTCP R078  
**Colour** Tan  
**Eye Pigment** 100/100  
**Age** 20

**Comment:**  
 Has been one of my favourites all along. Very showy heifer. Long bodied. Good hip to pin. Lovely strong muzzle with a good strong head. Should produce outstanding progeny. Joined 1/10/2021 to Wormbete Romeo R8. PTIC.

Purchaser: \$

May 2022 Simmental Trans Tasman Group Breedplan

	Calving Ease DIR [%]	Calving Ease DTRS [%]	Birth Wt. [kg]	200 Day Wt [kg]	400 Day Wt [kg]	600 Day Wt [kg]	Milk [kg]	Scrotal Size [cm]	Carcase Wt [kg]	Eye Muscle Area [sq cm]	Rib Fat [mm]	Rump Fat [mm]	Retail Beef Yield [%]	IMF [%]
EBV	-1.5		3	25	40	60	11	1.1	29					
Acc	26%		40%	44%	43%	44%	28%	35%	36%					

BARANA EMOTION

BARANA JURYMAN

BARANA EVATT

Sire BARANA LINDEL

BARANA ECHUCA

BARANA GEMSTONE G112

BREWERS HEIDI X316

Dam

CALLENDALE JASPER

BAR 5 SA ELTORRO 814S

CALLENDALE FAITH

HINES

BARANA MARCIA BANDEEKA POLL COSSACK

BARANA FRANZ

BARANA CHLOE

## LOT 46

### BARANA RAZZAMATAZZ (P)

A/c: BARANA PASTORAL



**DOB** 31/08/2020  
**Tattoo** PTCP R050  
**Colour** Tan/White  
**Eye Pigment** 0/0  
**Age** 22

**Comment:**  
 Don't let the colour worry you. Big roomy capacity heifer with plenty of depth of body. Nice & square behind. Joined 1/10/2021 to Wormbete Romeo R8. PTIC. DNA verification to sire pending.

Purchaser: \$

May 2022 Simmental Trans Tasman Group Breedplan

	Calving Ease DIR [%]	Calving Ease DTRS [%]	Birth Wt. [kg]	200 Day Wt [kg]	400 Day Wt [kg]	600 Day Wt [kg]	Milk [kg]	Scrotal Size [cm]	Carcase Wt [kg]	Eye Muscle Area [sq cm]	Rib Fat [mm]	Rump Fat [mm]	Retail Beef Yield [%]	IMF [%]
EBV	-6.3	-4.1	3.9	30	49	70	11	1	35	3.7	-0.4	-0.3	1.8	
Acc	28%	25%	41%	45%	47%	47%	28%	39%	39%	27%	26%	26%	27%	

BARANA EMOTION

BARANA JURYMAN

BARANA EVATT

Sire BARANA LINDEL

BARANA ECHUCA

BARANA GEMSTONE G112

BREWERS HEIDI X316

Dam

CHAMPS BRAVO

WOONALLEE JUMBO

WOONALLEE KATHIE G73

BARANA NECTAR

BARANA ECHUCA

BARANA GERALDENE

BENARBA XDANCER

## LOT 47

### BARANA REBEL R068 (PP)

A/c: BARANA PASTORAL



**DOB** 10/10/2020  
**Tattoo** PTCP R068  
**Colour** Red  
**Eye Pigment** 100/100  
**Age** 20

**Comment:**  
 Younger heifer. Medium frame. Once again depth & length of body. Joined 1/10/2021 to Wormbete Romeo R8. PTIC.

Purchaser: \$

May 2022 Simmental Trans Tasman Group Breedplan

	Calving Ease DIR [%]	Calving Ease DTRS [%]	Birth Wt. [kg]	200 Day Wt [kg]	400 Day Wt [kg]	600 Day Wt [kg]	Milk [kg]	Scrotal Size [cm]	Carcase Wt [kg]	Eye Muscle Area [sq cm]	Rib Fat [mm]	Rump Fat [mm]	Retail Beef Yield [%]	IMF [%]
EBV	-6.3	-2.6	4.2	28	47	67	9	1.6	30	2.4	-0.5	-0.3	1	
Acc	29%	27%	44%	48%	50%	52%	35%	38%	42%	26%	25%	25%	26%	

BARANA EMOTION

BARANA JURYMAN

BARANA EVATT

Sire BARANA LINDEL

BARANA ECHUCA

BARANA GEMSTONE G112

BREWERS HEIDI X316

BARANA EMOTION

CORINDADOWNS BUCKSHOT

BARANA XIT

Dam BARANA HALLA

BARANA YARDLEY

BARANA BONNIE

TENNYSONVALE XANDRA

## LOT 48

### BARANA ROSA R006 (P)

A/c: BARANA PASTORAL



**DOB** 1/03/2020  
**Tattoo** PTCP R006  
**Colour** Light Red  
**Eye Pigment** 100/100  
**Age** 28

**Comment:**  
 Thickset moderate heifer. Will produce those early maturing progeny. Joined 1/10/2021 to Wormbete Romeo R8. PTIC. DNA verification to sire pending.

Purchaser: \$

May 2022 Simmental Trans Tasman Group Breedplan

	Calving Ease DIR [%]	Calving Ease DTRS [%]	Birth Wt. [kg]	200 Day Wt [kg]	400 Day Wt [kg]	600 Day Wt [kg]	Milk [kg]	Scrotal Size [cm]	Carcase Wt [kg]	Eye Muscle Area [sq cm]	Rib Fat [mm]	Rump Fat [mm]	Retail Beef Yield [%]	IMF [%]
EBV	-3.7	-3.8	2.6	22	38	50	13	0.5	24	2.4	-0.4	-0.2	1.6	-0.3
Acc	32%	33%	45%	44%	46%	46%	35%	44%	39%	33%	34%	34%	34%	29%

BARANA EMOTION

BARANA JURYMAN

BARANA EVATT

Sire BARANA LINDEL

BARANA ECHUCA

BARANA GEMSTONE G112

BREWERS HEIDI X316

CHAMPS BRAVO

WOONALLEE JUMBO

WOONALLEE KATHIE G73

Dam BARANA MAREEN

BARANA ECHUCA

BARANA HICKORY

BARANA BANAN

LOT 49

BARANA SUSAN (PP) (TW)  
A/c: BARANA PASTORAL




DOB 25/02/2021  
Tattoo PTCP S011  
Colour Red  
Eye Pigment 100/100  
Age 16

Comment:  
Unjoined. Little bit more  
frame & scale. Has excellent  
capacity & depth & length.

Purchaser:

\$

May 2022 Simmental Trans Tasman Group Breedplan														
	Calving Ease DIR [%]	Calving Ease DTRS [%]	Birth Wt. [kg]	200 Day Wt [kg]	400 Day Wt [kg]	600 Day Wt [kg]	Milk [kg]	Scrotal Size [cm]	Carcase Wt [kg]	Eye Muscle Area [sq cm]	Rib Fat [mm]	Rump Fat [mm]	Retail Beef Yield [%]	IMF [%]
EBV	-0.6	1.4	2.3	25	37	51	7	1.1	27	3.7	-1.1	-1.4	2	-0.1
Acc	35%	35%	54%	55%	58%	54%	40%	33%	47%	33%	32%	32%	32%	26%

TOPWEIGHT DIRECTOR  
WILLANDRA GOMEZ  
WILLANDRA DIANA Z26  
Sire WOONALLEE LOOKING GLASS  
WOONALLEE BHR TORNADO  
WOONALLEE VASTI G52  
WOONALLEE VASTI C87

Dam  
BARANA EDNA  
BARANA VANILLA  
BARANA QUEANBEYAN

DOUBLE BAR D MAKE M POLLED  
DOUBLE BAR D MADDOX 40S  
DOUBLE BAR D ELSIE 7N  
WONDENIA TAURUS  
BARANA VANILLA  
BARANA QUEANBEYAN

LOT 50

BARANA SUMMER (PP)  
A/c: BARANA PASTORAL




DOB 6/02/2021  
Tattoo PTCP S003  
Colour Light Red  
Eye Pigment 100/100  
Age 17

Comment:  
Unjoined. Medium frame.  
Very soft skin. Heifer showing  
plenty of style.

Purchaser:

\$

May 2022 Simmental Trans Tasman Group Breedplan														
	Calving Ease DIR [%]	Calving Ease DTRS [%]	Birth Wt. [kg]	200 Day Wt [kg]	400 Day Wt [kg]	600 Day Wt [kg]	Milk [kg]	Scrotal Size [cm]	Carcase Wt [kg]	Eye Muscle Area [sg cm]	Rib Fat [mm]	Rump Fat [mm]	Retail Beef Yield [%]	IMF [%]
EBV	-0.4	0.3	2.3	25	39	57	10	0.9	28	2.8	-0.3	0	1.1	0.1
Acc	36%	36%	54%	57%	54%	54%	43%	32%	45%	33%	33%	33%	33%	26%

WOONALLEE FLAMBOYANT  
TOPWEIGHT JACK ARTA  
TOPWEIGHT BETTINA 333  
Sire WILLANDRA PANAMA  
MAJ ROBO  
WILLANDRA OLIVE B70  
QUAINDERING OLIVE V19

Dam  
BARANA EVATT  
BARANA BROOK  
BARANA XTRA

SHAWACRES NACOBI  
BULLOCKHILLS BUSTER  
BULLOCKHILLS ERP P U4  
BARANA YARDLEY  
BARANA XTRA

LOT 51

BARANA STELLA (PP)  
A/c: BARANA PASTORAL




DOB 25/03/2021  
Tattoo PTCP S019  
Colour Tan  
Eye Pigment 100/100  
Age 15

Comment:  
Unjoined. Plenty of barrel &  
stretch in this heifer. Strong  
head.

Purchaser:

\$

May 2022 Simmental Trans Tasman Group Breedplan														
	Calving Ease DIR [%]	Calving Ease DTRS [%]	Birth Wt. [kg]	200 Day Wt [kg]	400 Day Wt [kg]	600 Day Wt [kg]	Milk [kg]	Scrotal Size [cm]	Carcase Wt [kg]	Eye Muscle Area [sg cm]	Rib Fat [mm]	Rump Fat [mm]	Retail Beef Yield [%]	IMF [%]
EBV	-0.5	-0.5	2	24	35	43	8	0.2	24	3.6	-0.5	-0.4	1.9	-0.2
Acc	32%	34%	50%	55%	53%	50%	38%	32%	43%	32%	32%	32%	32%	25%

WOONALLEE FLAMBOYANT  
TOPWEIGHT JACK ARTA  
TOPWEIGHT BETTINA 333  
Sire WILLANDRA PANAMA  
MAJ ROBO  
WILLANDRA OLIVE B70  
QUAINDERING OLIVE V19

Dam  
BARANA NIGELLA  
BARANA BRONTE  
BARANA BRONTE

CHAMPS BRAVO  
WOONALLEE JUMBO  
WOONALLEE KATHIE G73  
GOWRIE YANKEE  
BENARBA X01

LOT 52

BARANA SAPPHIRE (H)  
A/c: BARANA PASTORAL




DOB 24/03/2021  
Tattoo PTCP S018  
Colour Light Tan  
Eye Pigment 100/100  
Age 15

Comment:  
Unjoined. Moderate heifer.  
Very well balanced. Stands  
nice & square behind.

Purchaser:

\$

May 2022 Simmental Trans Tasman Group Breedplan														
	Calving Ease DIR [%]	Calving Ease DTRS [%]	Birth Wt. [kg]	200 Day Wt [kg]	400 Day Wt [kg]	600 Day Wt [kg]	Milk [kg]	Scrotal Size [cm]	Carcase Wt [kg]	Eye Muscle Area [sg cm]	Rib Fat [mm]	Rump Fat [mm]	Retail Beef Yield [%]	IMF [%]
EBV	0.1	0.1	1.8	23	35	45	8	0.3	26	3.8	-0.6	-0.4	2	
Acc	32%	34%	49%	54%	50%	48%	39%	30%	41%	31%	31%	31%	31%	

WOONALLEE FLAMBOYANT  
TOPWEIGHT JACK ARTA  
TOPWEIGHT BETTINA 333  
Sire WILLANDRA PANAMA  
MAJ ROBO  
WILLANDRA OLIVE B70  
QUAINDERING OLIVE V19

Dam  
BARANA PHOEBE 2ND  
BARANA Z025

CHAMPS BRAVO  
WOONALLEE JUMBO  
WOONALLEE KATHIE G73  
ROWLON PARK EXTRA 247  
BARANA UNDERSSELL

LOT 53

BARANA STORM (Pp)  
A/c: BARANA PASTORAL



**DOB** 25/03/2021  
**Tattoo** PTCP S020  
**Colour** Tan  
**Eye Pigment** 100/100  
**Age** 15

**Comment:**  
Unjoined. Very similar to all  
Panama heifers with that  
depth length soft silky coats.

Purchaser: \$

May 2022 Simmental Trans Tasman Group Breedplan

	Calving Ease DIR [%]	Calving Ease DTRS [%]	Birth Wt. [kg]	200 Day Wt [kg]	400 Day Wt [kg]	600 Day Wt [kg]	Milk [kg]	Scrotal Size [cm]	Carcase Wt [kg]	Eye Muscle Area [sg cm]	Rib Fat [mm]	Rump Fat [mm]	Retail Beef Yield [%]	IMF [%]
EBV	-6.2	-4.3	3.8	30	51	72	13	1	36	3.7	-0.4	-0.2	1.8	
Acc	28%	25%	43%	52%	48%	47%	29%	38%	39%	27%	26%	26%	27%	

Sire WOODNALLEE FLAMBOYANT  
TOPWEIGHT JACK ARTA  
TOPWEIGHT BETTINA 333  
WILLANDRA PANAMA  
MAJ ROBO  
WILLANDRA OLIVE B70  
QUAINDERING OLIVE V19

Dam CHAMPS BRAVO  
WOODNALLEE JUMBO  
WOODNALLEE KATHIE G73  
BARANA PASADENA P103  
WATERFRONT FABIAN-F72  
BARANA JORDANA  
BARANA ECHO

LOT 54

BARANA STAR (PP) (TW)  
A/c: BARANA PASTORAL



**DOB** 11/06/2021  
**Tattoo** PTCP S032  
**Colour** Tan  
**Eye Pigment** 100/100  
**Age** 12

**Comment:**  
Unjoined. Medium framed  
soft heifer. Would make good  
show heifer. Strong muzzle  
& head. Excellent length &  
depth.

Purchaser: \$

May 2022 Simmental Trans Tasman Group Breedplan

	Calving Ease DIR [%]	Calving Ease DTRS [%]	Birth Wt. [kg]	200 Day Wt [kg]	400 Day Wt [kg]	600 Day Wt [kg]	Milk [kg]	Scrotal Size [cm]	Carcase Wt [kg]	Eye Muscle Area [sg cm]	Rib Fat [mm]	Rump Fat [mm]	Retail Beef Yield [%]	IMF [%]
EBV	1.2	0.2	1.4	20	28	40	8	0.6	21	2.8	0.1	0.5	0.9	
Acc	31%	32%	45%	46%	45%	44%	36%	29%	38%	31%	30%	30%	30%	

Sire BARANA EMOTION  
BARANA JURYMAN  
BARANA EVATT  
BARANA LINDEL  
BARANA ECHUCA  
BARANA GEMSTONE G112  
BREWERS HEIDI X316

Dam BAR 5 SA ELTORRO 814S  
CALLENDALE JASPER  
CALLENDALE FAITH  
BARANA MIRIAM  
BULLOCKHILLS BUSTER  
BARANA GAYE  
BENARBA Y021

LOT 55

BARANA SYDNEY (Pp)  
A/c: BARANA PASTORAL



**DOB** 16/07/2021  
**Tattoo** PTCP S045  
**Colour** Tan  
**Eye Pigment** 100/100  
**Age** 11

**Comment:**  
Unjoined. Very similar to last  
lot. Soft fine skin with width  
& depth.

Purchaser: \$

May 2022 Simmental Trans Tasman Group Breedplan

	Calving Ease DIR [%]	Calving Ease DTRS [%]	Birth Wt. [kg]	200 Day Wt [kg]	400 Day Wt [kg]	600 Day Wt [kg]	Milk [kg]	Scrotal Size [cm]	Carcase Wt [kg]	Eye Muscle Area [sg cm]	Rib Fat [mm]	Rump Fat [mm]	Retail Beef Yield [%]	IMF [%]
EBV	-2.3		3.5	30	50	72	12	1	37	3.7	-0.5	-0.4	1.9	
Acc	27%		44%	53%	49%	48%	30%	37%	40%	26%	26%	25%	26%	

Sire TOPWEIGHT DIRECTOR  
WILLANDRA GOMEZ  
WILLANDRA DIANA Z26  
WOODNALLEE LOOKING GLASS  
WOODNALLEE BHR TORNADO  
WOODNALLEE VASTI G52  
WOODNALLEE VASTI C87

Dam CHAMPS BRAVO  
WOODNALLEE JUMBO  
WOODNALLEE KATHIE G73  
BARANA PHYLLYS  
BANDEEKA POLL COSSACK  
BARANA FLEUR  
BARANA ZILA

LOT 56

BARANA SALOME (PP)  
A/c: BARANA PASTORAL



**DOB** 6/07/2021  
**Tattoo** PTCP S042  
**Colour** Red  
**Eye Pigment** 100/100  
**Age** 12

**Comment:**  
Unjoined. Has the makings of  
a top show heifer. Stands up  
square. Deep barrelled easy  
doing type.

Purchaser: \$

May 2022 Simmental Trans Tasman Group Breedplan

	Calving Ease DIR [%]	Calving Ease DTRS [%]	Birth Wt. [kg]	200 Day Wt [kg]	400 Day Wt [kg]	600 Day Wt [kg]	Milk [kg]	Scrotal Size [cm]	Carcase Wt [kg]	Eye Muscle Area [sg cm]	Rib Fat [mm]	Rump Fat [mm]	Retail Beef Yield [%]	IMF [%]
EBV	-4.9	-1.7	3.6	27	44	65	10	1.4	30	2.6	-0.2	0	1	
Acc	30%	27%	48%	57%	55%	53%	34%	40%	45%	27%	26%	26%	27%	

Sire BARANA EMOTION  
BARANA JURYMAN  
BARANA EVATT  
BARANA LINDEL  
BARANA ECHUCA  
BARANA GEMSTONE G112  
BREWERS HEIDI X316

Dam CORINDADOWNS BUCKSHOT  
BARANA EMOTION  
BARANA XIT  
BARANA KINDNESS  
BULLOCKHILLS BUSTER  
BARANA ELEANOR  
BARANA ZERA

# LOT 57

## BARANA SASHA (P) A/c: BARANA PASTORAL



**DOB** 14/08/2021  
**Tattoo** PTCP S076  
**Colour** Tan  
**Eye Pigment** 100/100  
**Age** 10

**Comment:**  
Unjoined. Small but still has that strength and smooth muscle pattern.  
DNA verification to sire pending.

Purchaser: \$

### May 2022 Simmental Trans Tasman Group Breedplan

	Calving Ease DIR [%]	Calving Ease DTRS [%]	Birth Wt. [kg]	200 Day Wt [kg]	400 Day Wt [kg]	600 Day Wt [kg]	Milk [kg]	Scrotal Size [cm]	Carcase Wt [kg]	Eye Muscle Area [sq cm]	Rib Fat [mm]	Rump Fat [mm]	Retail Beef Yield [%]	IMF [%]
EBV	-4	-2.3	3.5	30	48	70	12	0.9	35	3.5	-0.3	-0.1	1.7	
Acc	28%	25%	46%	55%	53%	52%	31%	41%	43%	28%	28%	27%	28%	

#### WOONALLEE FLAMBOYANT

TOPWEIGHT JACK ARTA  
TOPWEIGHT BETTINA 333  
WILLANDRA PANAMA  
MAJ ROBO  
WILLANDRA OLIVE B70  
QUAINDERING OLIVE V19

#### CHAMPS BRAVO

WOONALLEE JUMBO  
WOONALLEE KATHIE G73  
BARANA NOVOTEL  
BARANA EMOTION  
BARANA KENDRA  
BARANA EGGNOG

Sire

Dam

# LOT 58

## BARANA LINDEL [PP] SEMEN LOTS A/c: BARANA PASTORAL



Barana Lindel PTCPL053 [PP]

**DOB** 28/08/2015  
**Tattoo** PTCP L053  
**Colour** Dark Red  
**Eye Pigment** 100/100

### Selling Semen Lots of 10 straws each.

Homozygous polled. Barana Lindel [PP] is breeding very well here at Barana as you can see from his progeny coming through the sale. He consistently throws true-to-type females & bulls of equal quality. He's a functional, easy doing, thickset bull with very good feet & tremendous carcass characteristics with a soft, fine skin. Semen is stored with G Wilkinson Breeding Services at Coonabarabran, NSW and will be the purchaser's responsibility to arrange delivery.

### May 2022 Simmental Trans Tasman Group Breedplan

	Calving Ease DIR [%]	Calving Ease DTRS [%]	Birth Wt. [kg]	200 Day Wt [kg]	400 Day Wt [kg]	600 Day Wt [kg]	Milk [kg]	Scrotal Size [cm]	Carcase Wt [kg]	Eye Muscle Area [sq cm]	Rib Fat [mm]	Rump Fat [mm]	Retail Beef Yield [%]	IMF [%]
EBV	-8.1	-2.4	+5.4	+37	+65	+98	+13	+2.0	+47	+2.9	-0.4	-0.3	+1.2	+0.3
Acc	42%	33%	59%	68%	69%	73%	35%	59%	59%	39%	36%	36%	38%	27%

Sire  
BARANA JURYMAN (P)  
BARANA EMOTION (P)  
BARANA EVATT (P)

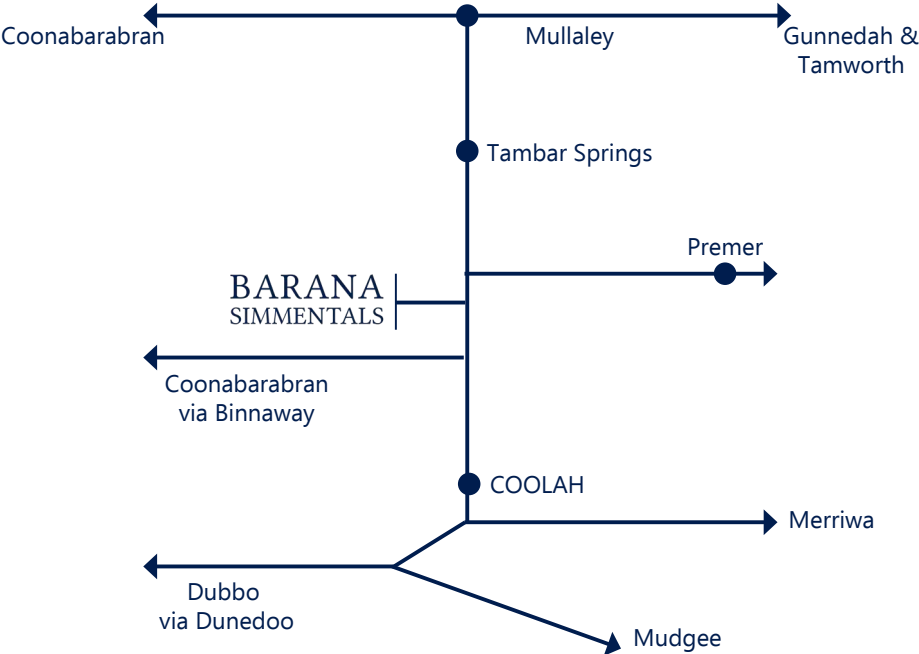
Dam  
BARANA GEMSTONE G112 (P)  
BARANA ECHUCA (P)  
BREWERS HEIDI X316 (S)

**Lot 58A** 10 Straws Purchaser: \$

**Lot 58B** 10 Straws Purchaser: \$

**Lot 58C** 10 Straws Purchaser: \$

DIRECTIONS





LOT 1 BARANA RAPHAEL R044 [Pp]



LOT 4 BARANA RENEGADE R019[PP]



LOT 15 BARANA ANGUS UNREGISTERED [P]



LOT 16 BARANA ANGUS RAMBO R2 [P]



LOT 33 BARANA UNREGISTERED [S]



LOT 34 BARANA STILLMAN [Pp]

# BARANA SIMMENTALS

Peter Cook  
0427 775 233

baranasimmentals.com  
barana@bigpond.com



Gunnedah | Nik Hannaford 0417 201 460  
Tamworth | Brian Kennedy 0427 844 047  
Dubbo | Paul Jameson 0428 667 998  
Inverell | Lincoln McKinlay 0419 239 963  
Gunnedah | John Glover 0428 486 887



Luke Scicluna 0428 421 828  
Tom Tanner 0448 462 177  
Paul Banks 0427 922 700